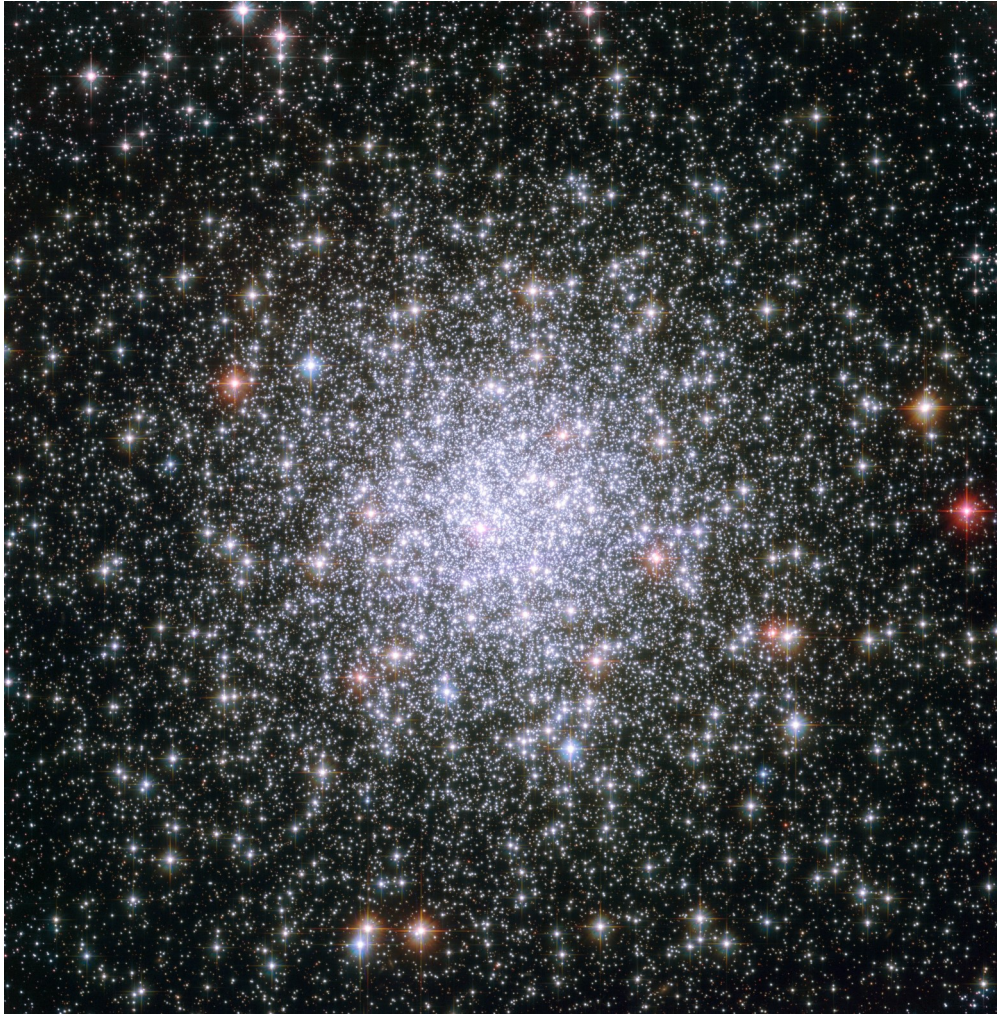


# M69, Globular Cluster, Sagittarius

Continuing a series of photograph's of the Messier Objects



**Rugby & District Astronomical Society**

[www.rugbyastro.org.uk](http://www.rugbyastro.org.uk)

Honorary President : -  
 Treasurer: Dennis Osborne  
 Speakers Secretary: Roland Clarke  
 Webmaster : David Riley

Chair: Chris Longthorn  
 Secretary: Richard Heath  
 Membership Secretary: Dave Hopkinson  
 Sky Notes: Chris Longthorn

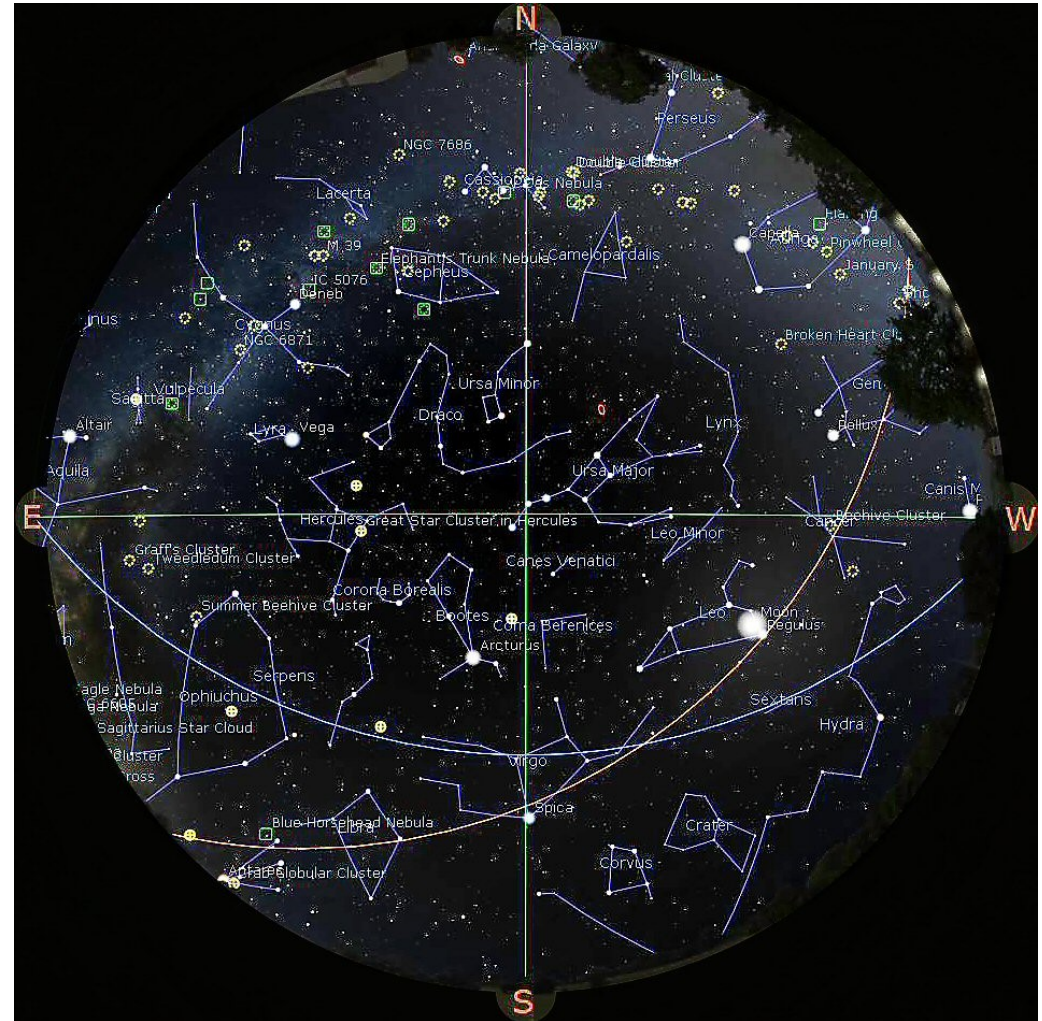
E-Mail: [rugby-astro@hotmail.co.uk](mailto:rugby-astro@hotmail.co.uk)

©R&DAS 2024

# Rugby & District Astronomical Society

## Monthly Sky Notes

No. 173, May 2024, by Chris Longthorn



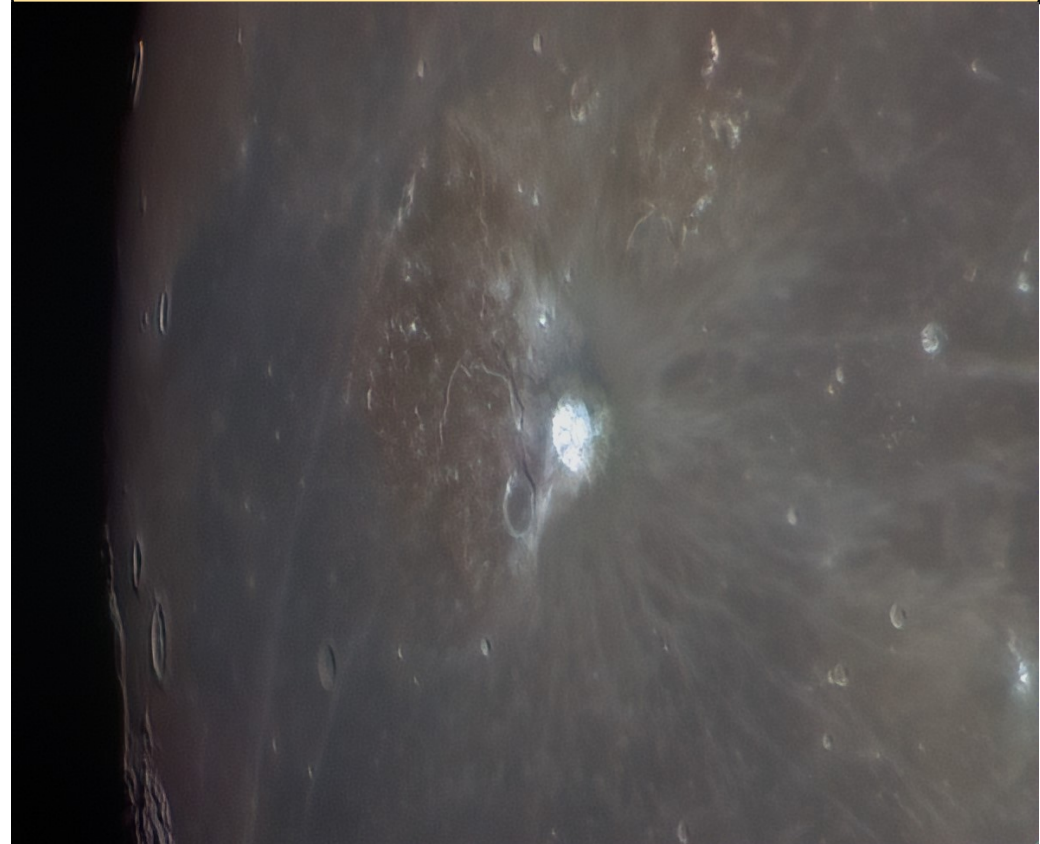
**The night sky at 23:00 U.T.C., May 15th, 2024**



## Sky Events for May 2024

- 06 08:25 Mercury 3.8°S of Moon  
08 03:22 NEW MOON  
09 21:00 Mercury at Greatest Elong: 26.4°W  
11 23:29 ISS, 60°, SSE  
12 22:40 ISS, 47°, SSE  
13 11:00 Uranus in Conjunction with Sun  
13 21:51 ISS, 35°, SSE  
13 23:27 ISS, 77°, S  
14 22:38 ISS, 69°, SSE  
15 11:48 FIRST QUARTER MOON  
15 21:48 ISS, 56°, SSE  
15 23:25 ISS, 80°, S  
16 22:35 ISS, 80°, S  
17 21:46 ISS, 75°, S  
17 23:23 ISS, 66°, SSW  
18 18:00 Jupiter in Conjunction with Sun  
18 22:33 ISS, 76°, S  
19 19:30 R@DAS Monthly Meeting  
19 23:20 ISS, 45°, SSW  
20 22:31 ISS, 57°, SSW  
22 22:28 ISS, 36°, SSW  
23 13:53 FULL MOON  
30 17:13 LAST QUARTER MOON  
31 08:01 Saturn 0.4°N of Moon: Occn.

## April Image of the Month



Aristarchus – an extraordinarily bright crater, also visible in Earthshine, the centre of a bright ray system; believed to have originated about 450 million years ago. 40 km in diameter, 3000 m deep.

Herodotus – A flooded crater, 35 km diameter.

Schroter's Valley - This is the largest sinuous rille on the Moon. It begins at a 6 km diameter crater located 25 km to the north of Herodotus. The start of the rille has been termed the "Cobra's Head" by some observers, due to its resemblance to a snake. From the crater it follows a meandering path, first to the north, then setting a course toward the northwest, before finally bending back to the south until it reaches a 1 km high precipice at the edge of the Oceanus Procellarum. The rille has a maximum width of about 10 km, then gradually narrows to less than a kilometer near its terminus.

## Object of the Month for May



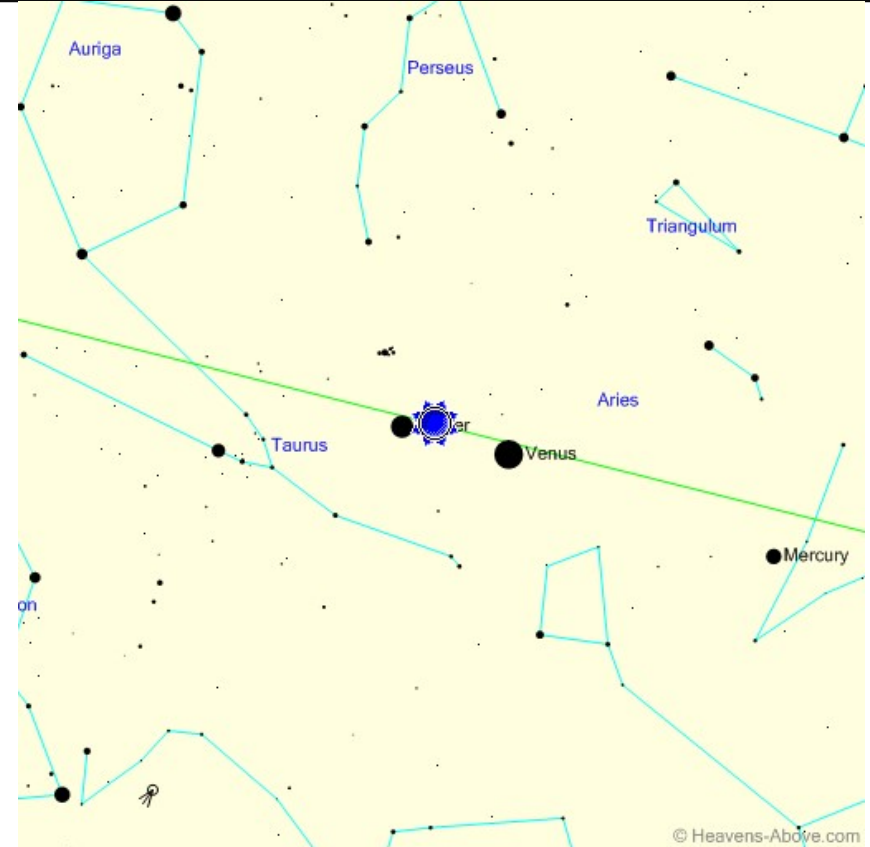
By Ole Nielsen - <http://www.ngc7000.org/ccd/ngc4244-20040414.jpg>, CC BY-SA 2.5, <https://commons.wikimedia.org/w/index.php?curid=1288812>

NGC 4244, also known as Caldwell 26, is an edge-on loose spiral galaxy in the constellation Canes Venatici, and is part of the M94 Group or Canes Venatici I Group, a galaxy group relatively close to the Local Group containing the Milky Way. In the sky, it is located near the yellow naked-eye star, Beta Canum Venaticorum, but also near the barred spiral galaxy NGC 4151 and irregular galaxy NGC 4214.

With an apparent magnitude of 10.18, NGC 4244 lies approximately 4.3 megaparsecs (14 million light years) away. A nuclear star cluster and halo is located near the centre of this galaxy.

NGC 4244

## The Sun, mid-May



Event	Time	Altitude	Azimuth
Astronomical twilight ends:	00:15	-18.0°	349°
Minimum altitude:	01:01	-18.7°	360°
Astronomical twilight begins:	01:47	-18.0°	11°
Nautical twilight begins:	03:27	-12.0°	35°
Civil twilight begins:	04:26	-6.0°	48°
Sunrise:	05:09	-0.8°	57°
Maximum altitude:	13:02	56.7°	180°
Sunset:	20:55	-0.8°	304°
Civil twilight ends:	21:38	-6.0°	313°
Nautical twilight ends:	22:38	-12.0°	326°

All data courtesy of Heavens-Above ([www.heavens-above.com](http://www.heavens-above.com))

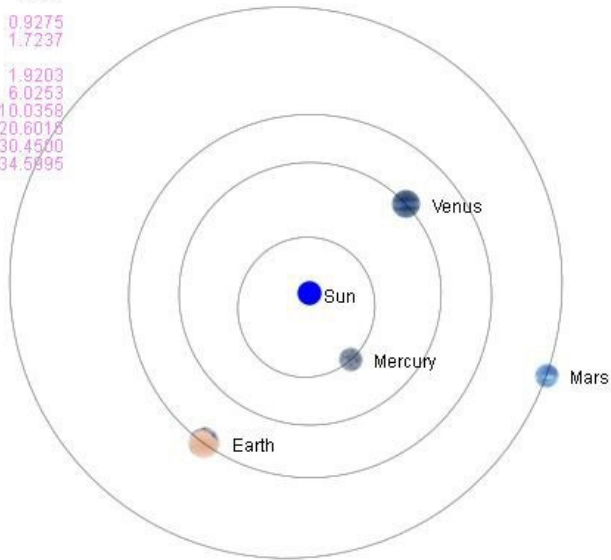
# The Planets, mid May, 2024

## Inner Solar System

2024-05-15 (BST)

0h00m

	Sun	Earth
Mercury	0.4349	0.9275
Venus	0.7232	1.7237
Earth	1.0111	
Mars	1.3819	1.9203
Jupiter	5.0151	6.0253
Saturn	9.6988	10.0358
Uranus	19.5915	20.6018
Neptune	29.9003	30.4500
Pluto	35.0148	34.5995

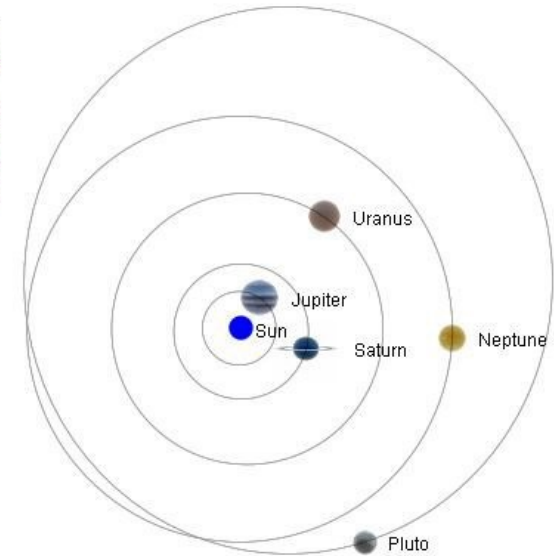


## Outer Solar System

2024-05-15 (BST)

0h00m

	Sun	Earth
Mercury	0.4349	0.9275
Venus	0.7232	1.7237
Earth	1.0111	
Mars	1.3819	1.9203
Jupiter	5.0151	6.0253
Saturn	9.6988	10.0358
Uranus	19.5915	20.6018
Neptune	29.9003	30.4500
Pluto	35.0148	34.5995



	Mercury	Venus	Mars	Jupiter	Saturn	Uranus	Neptune
Right ascension	1h 14m 37.1s	0h 39m 34.2s	23h 12m 17.4s	3h 10m 18.5s	23h 6m 2.9s	3h 14m 56.9s	23h 54m 43.1s
Declination	9° 51' 37"	2° 38' 55"	-6° 28' 56"	16° 55' 24"	-7° 36' 48"	17° 46' 8"	-1° 54' 23"
Range (AU)	0.578	1.661	2.042	5.89	10.464	20.483	30.8
Elongation from Sun	3.4°	13.8°	37.4°	26.0°	39.2°	27.2°	25.8°
Brightness	5.2	-3.8	1.2	-1.9	1.2	5.8	8
Equatorial Diameter	11.64"	10.05"	4.59"	33.47"	15.88"	3.44"	2.22"
Phase Angle	171.9°	19.2°	26.0°	5.0°	3.7°	1.3°	0.8°
Constellation	Pisces	Cetus	Aquarius	Aries	Aquarius	Aries	Pisces
Meridian transit	12:51	12:16	10:49	14:46	10:43	14:51	11:31
Rises	06:00	06:03	05:23	07:14	05:24	07:14	05:42
Sets	19:41	18:29	16:14	22:18	16:02	22:28	17:21
Altitude	30.5°	19.6°	-0.5°	50.2°	-2.4°	51.4°	9.4°
Azimuth	244.0°	247.5°	260.1°	215.6°	260.6°	214.5°	254.3°