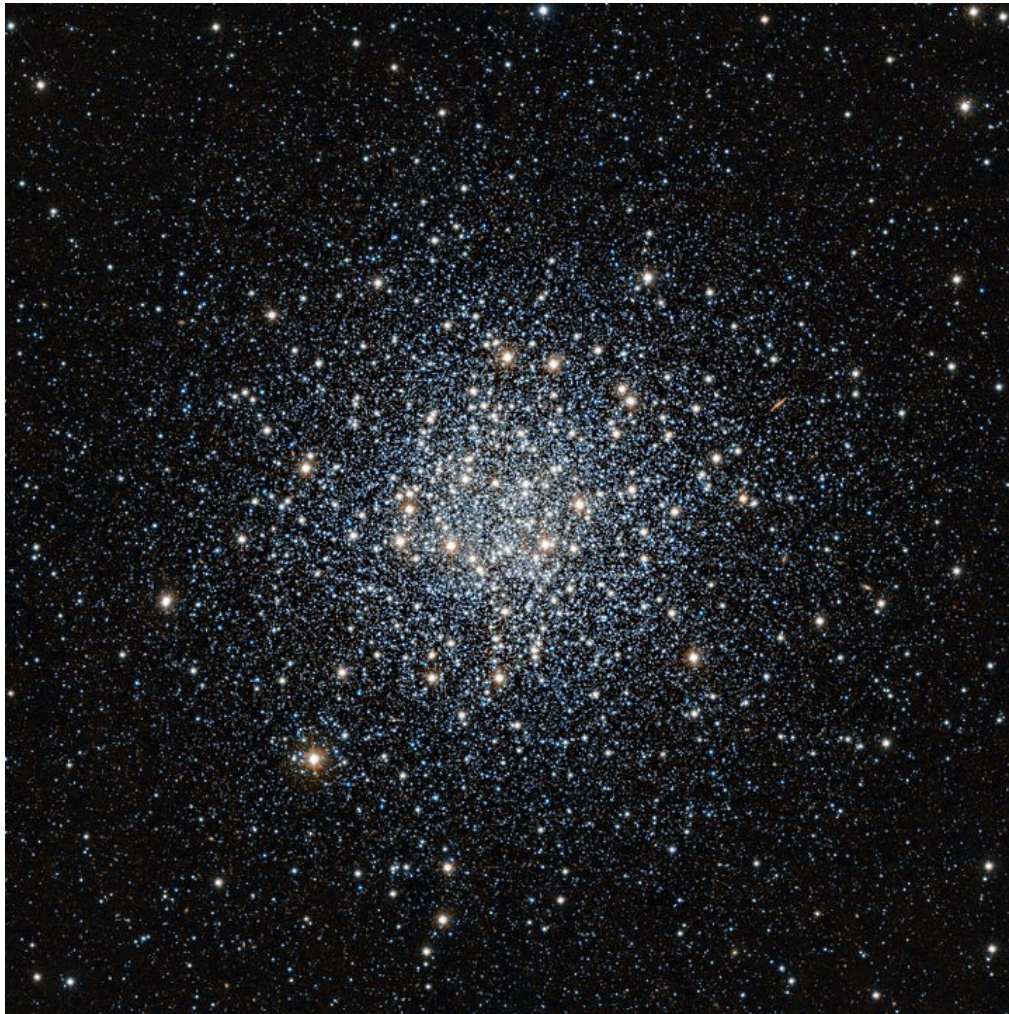


M55, Globular Cluster (Sagittarius)

Continuing a series of photograph's of the Messier Objects.



By ESO/J. Emerson/VISTA - <http://www.eso.org/public/images/eso1220a/>, CC BY 4.0, <https://commons.wikimedia.org/w/index.php?curid=19381930>

Rugby & District Astronomical Society

www.rugbyastro.org.uk

| | | | |
|---------------------|----------------|-----------------------|-----------------|
| Honorary President: | - | Chair: | Chris Longthorn |
| Treasurer: | Dennis Osborne | Membership Secretary: | Dave Hopkinson |
| Webmaster: | David Riley | Secretary: | Richard Heath |
| Speakers Secretary: | Roland Clarke | Sky Notes: | Chris Longthorn |

Email rugby-Astro@hotmail.co.uk

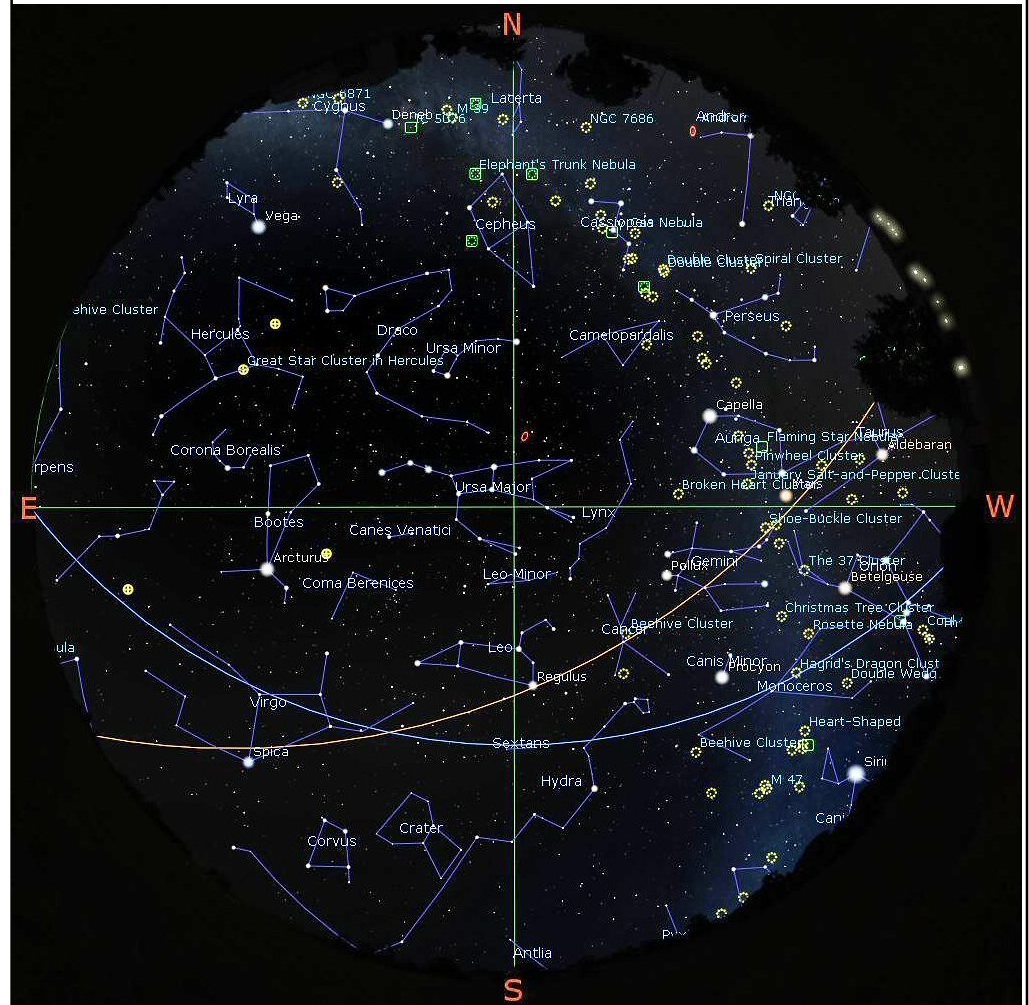
© R&DAS 2023

Rugby & District Astronomical Society

Sky Notes

by Chris Longthorn

March 2023, no 159

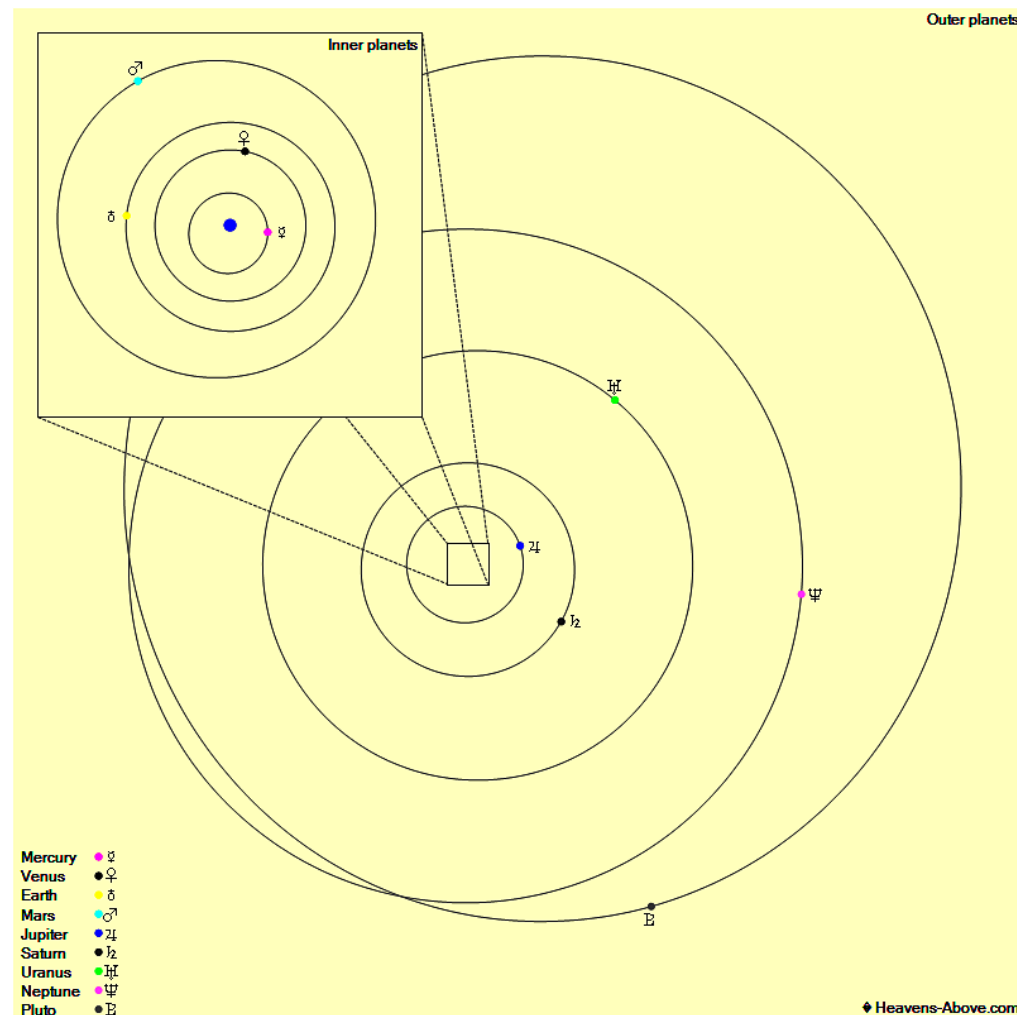


The night sky at 23:00 U.T.C., March 15th 2023

Sky Events for March 2023

- 01 06:12 ISS, -3.6, 62°, SSW
- 02 04:00 Venus 0.5°N of Jupiter
- 03 06:11 ISS, -3, 40°, SSW
- 07 12:40 FULL MOON
- 15 02:08 LAST QUARTER MOON
- 15 23:00 Neptune in Conjunction with Sun
- 17 11:00 Mercury at Superior Conjunction
- 17 19:30 Observing at Barby: 35% Waxing Crescent Moon.
- 18 19:30 Observing at Barby: Deep Sky.
- 18 20:14 ISS, -3.1, 39°, S
- 19 15:20 Saturn 3.6°N of Moon
- 19 19:30 R&DAS Meeting and AGM
- 20 21:25 Vernal Equinox
- 20 20:12 ISS, -3.9, 65°, SSE
- 21 17:23 NEW MOON
- 21 19:22 ISS, -3.5, 52°, SSE
- 22 19:54 Jupiter 0.5°N of Moon: Occn.
- 22 20:09 ISS, -3.9, 79°, S
- 23 19:19 ISS, -3.8, 72°, S
- 24 10:28 Venus 0.1°N of Moon: Occn.
- 24 19:30 Observing at Barby: 35% Waxing Crescent Moon.
- 24 20:06 ISS, -3.9, 78°, S
- 25 19:16 ISS, -3.8, 81°, S
- 25 19:30 Observing at Barby: Deep Sky.
- 25 23:42 Pleiades 1.9°N of Moon
- 26 21:03 ISS, -3.6, 62°, SSW
- 27 20:13 ISS, -3.7, 73°, S
- 28 13:16 Mars 2.3°S of Moon
- 28 20:59 ISS, -3, 41°, SSW
- 29 02:32 FIRST QUARTER MOON
- 29 20:09 ISS, -3.3, 54°, SSW

The Planets, mid March



Mercury is in Aquarius with a magnitude of -1.7, a phase of 100%, and a diameter of 5". It rises at 06:29, transits at 12:10, and sets at 17:53. It is currently too close to the Sun to be observed.

Venus is in Pisces with a magnitude of -4.0, a phase of 82%, and a diameter of 13". It rises at 07:17, transits at 14:19, and sets at 21:22. It is visible in the evening sky.

Mars is in Taurus with a magnitude of +0.7, a phase of 90%, and a diameter of 7". It sets at 02:53, rises again at 09:34, and transits at 18:13. It is visible in the evening sky.

Jupiter is in Pisces with a magnitude of -2.1 and a diameter of 34". It rises at 07:02, transits at 13:31, and sets at 20:00. It is visible low in the west after sunset.

Saturn is in Aquarius with a magnitude of +0.9 and a diameter of 15". It rises at 05:51, transits at 10:48, and sets at 15:45. It is visible low in the east before sunrise.

Uranus is in Aries with a magnitude of +5.8 and a diameter of 3". It rises at 07:56, transits at 15:28, and sets at 23:00. It is visible in the evening sky.

Neptune is in Pisces with a magnitude of +8.0 and a diameter of 2". It rises at 06:30, transits at 12:18, and sets at 18:05. It is currently too close to the Sun to be observed.