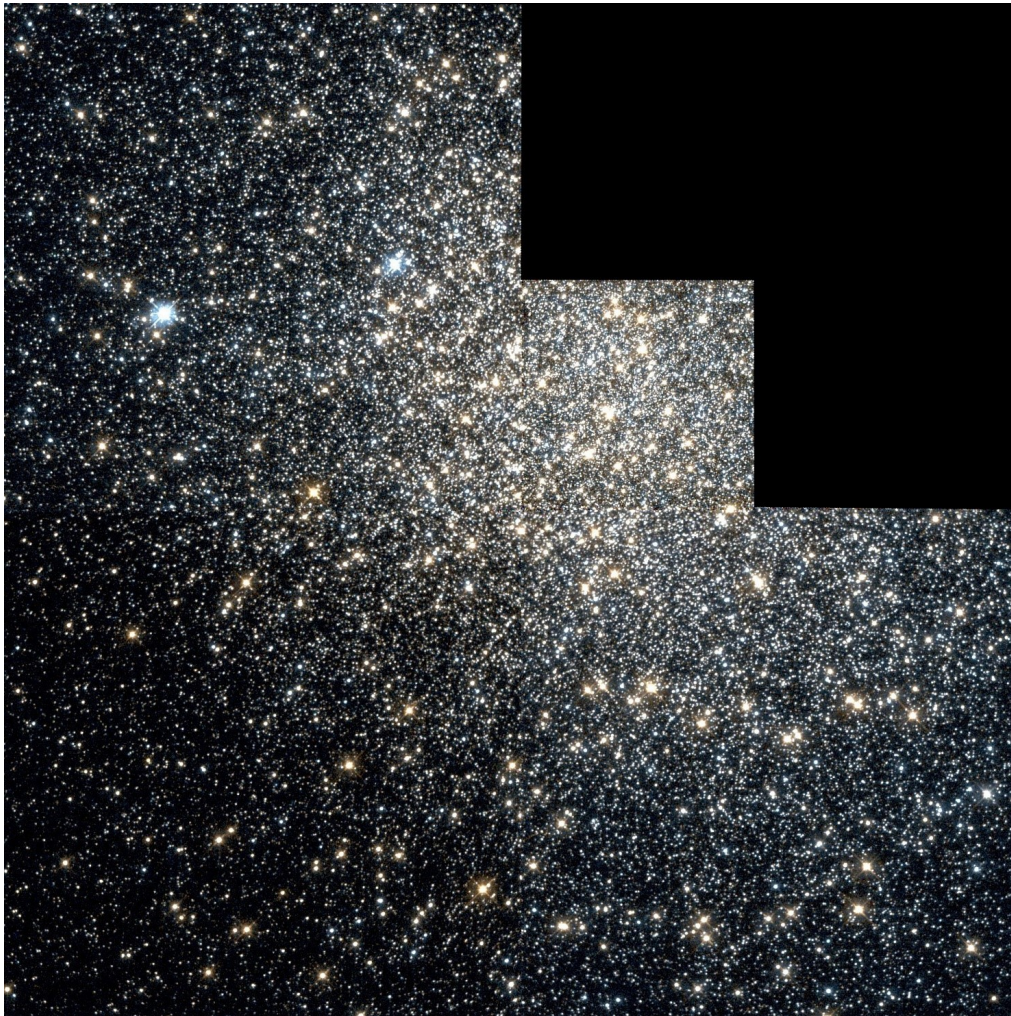


M19 Globular Cluster (Ophiuchus)

Continuing a series of photograph's of the Messier Objects.

By Public Domain, https://commons.wikimedia.org/wiki/File:Messier_19_Hubble_WikiSky.jpg



Rugby & District Astronomical Society

www.rugbyastro.org.uk

Honorary President:	-	Chair:	Sarah Walker
Treasurer:	Dennis Osborne	Membership Secretary:	Roland Clarke
Webmaster:	David Riley	Secretary:	Richard Heath
Speakers Secretary:	Chris Longthorn	Sky Notes:	Chris Longthorn

Email rugby-Astro@hotmail.co.uk

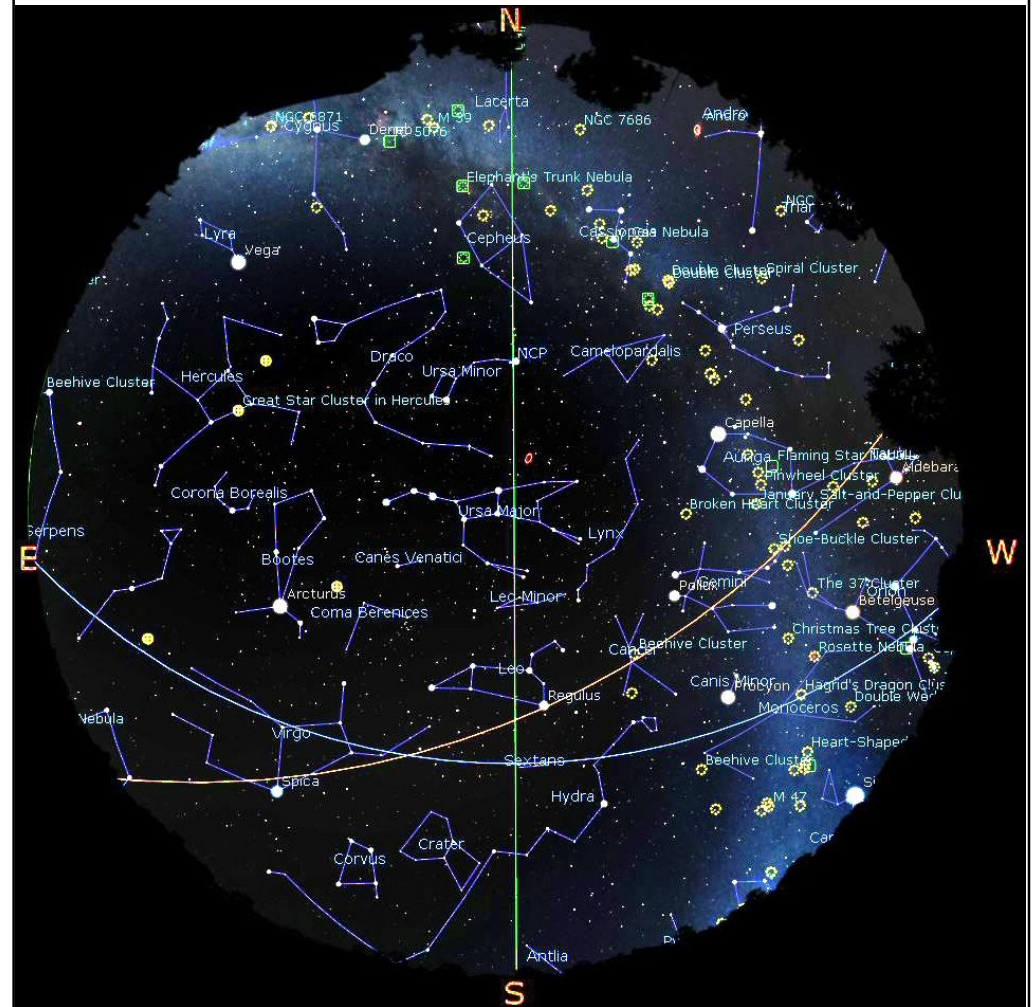
© R&DAS 2020

Rugby & District Astronomical Society

Sky Notes

by Chris Longthorn

March 2020, no 125

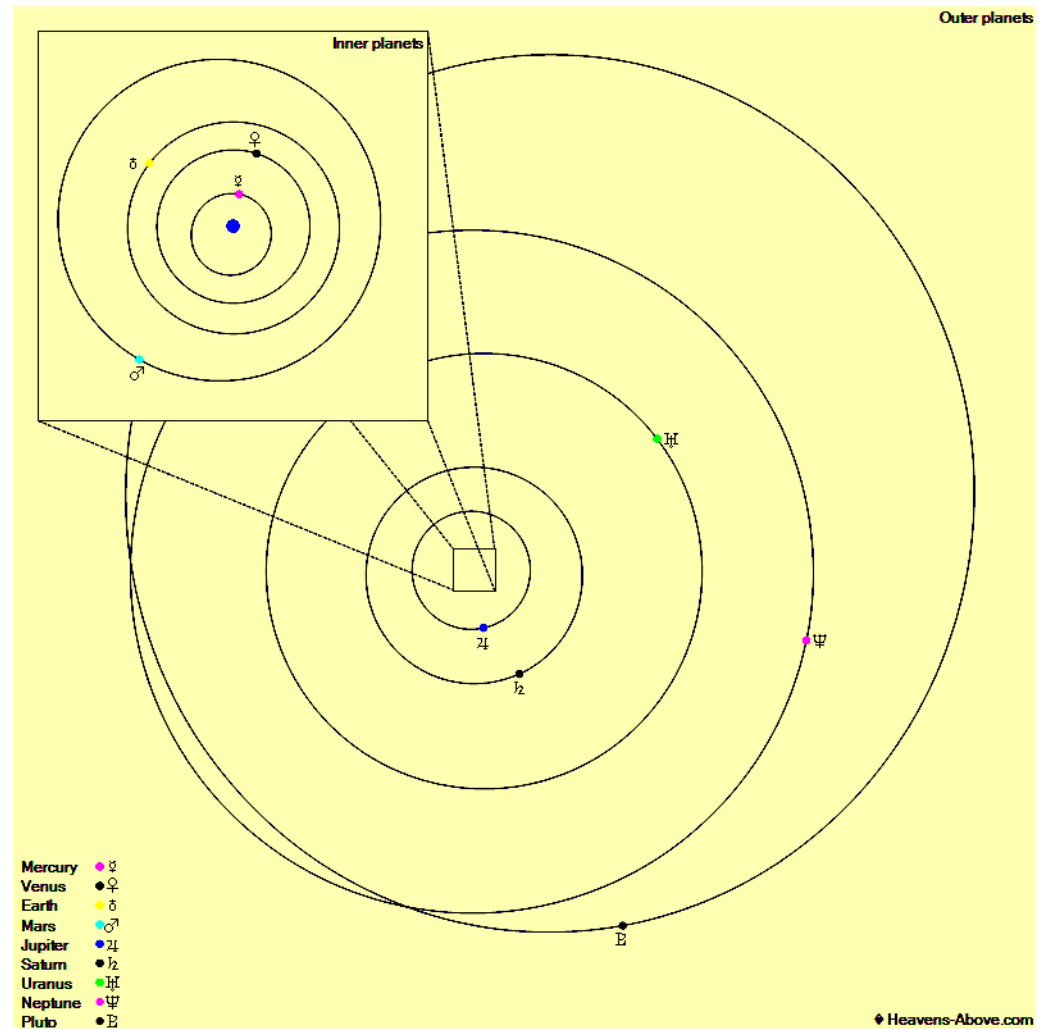


The night sky at 23:00 U.T.C., March 15th 2020

2020 March

Sunday	Monday	Tuesday	Wednesday	Thursday	Friday	Saturday
1	2 Moon- First Quarter 19:57	3	4	5	6 Moon- Bee- hive 21:08	7
8 Neptune Sun 13:09	9 Full Moon 18:48	10	11	12	13 ISS, -3.6, 19:19, 73°, NW Observing at Barby	14 ISS, -3.3, 18:31, 42°, SE Observing at Barby
15 R&DAS Monthly Meeting and AGM	16 Last Quarter 10:34	17	18 Moon- Mars 09:19 Moon- Jupiter 11:18 ISS, -3.4, 05:20, 65°, NE	19 Moon- Saturn 01:04	20 Spring Eq 04:50 Mars- Jup 11:24	21 Moon- Mercury 18:48
22	23	24 New Moon 10:28	25	26	27 Observing at Barby	28 Observing at Barby
29	30	31 Mars- Sat 21:00	1 First Quarter 11:21	2	3 Moon- Bee- hive 07:24 Venus- M45 15:39	4

The Planets, mid month.



Mercury is in Aquarius with a magnitude of +0.6, a phase of 38%, and a diameter of 9". It rises at 05:34, transits at 10:37, and sets at 15:40. It is visible low in the east before sunrise.

Venus is in Aries with a magnitude of -4.3, a phase of 56%, and a diameter of 21". It rises at 07:23, transits at 15:03, and sets at 22:44. It is visible in the evening sky.

Mars is in Sagittarius with a magnitude of +1.0, a phase of 90%, and a diameter of 6". It rises at 04:02, transits at 07:55, and sets at 11:49. It is visible in the morning sky.

Jupiter is in Sagittarius with a magnitude of -2.0 and a diameter of 35". It rises at 04:07, transits at 08:07, and sets at 12:07. It is visible in the morning sky.

Saturn is in Sagittarius with a magnitude of +0.7 and a diameter of 16". It rises at 04:29, transits at 08:38, and sets at 12:47. It is visible in the morning sky.

Uranus is in Aries with a magnitude of +5.9 and a diameter of 3". It rises at 07:30, transits at 14:39, and sets at 21:49. It is visible in the evening sky.

Neptune is in Aquarius with a magnitude of +8.0 and a diameter of 2". It rises at 06:16, transits at 11:51, and sets at 17:25. It is currently too close to the Sun to be observed.