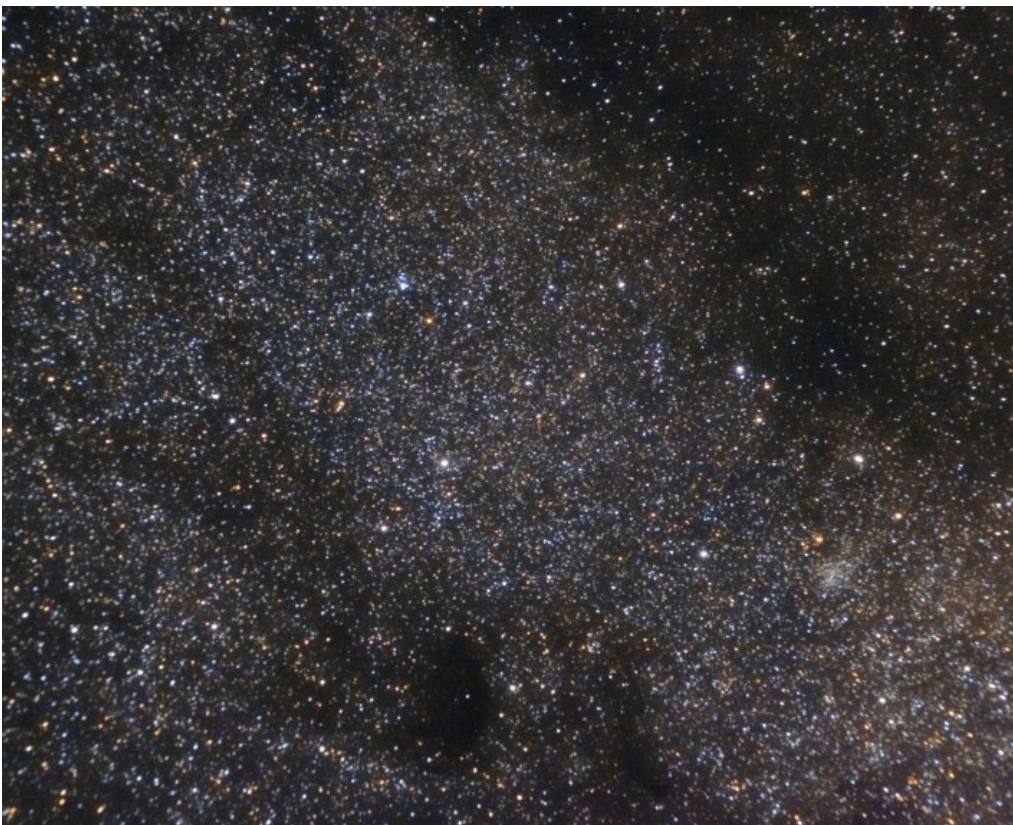


M24, Open Cluster (Sagittarius), The Sagittarius Starcloud

Continuing a series of photograph's of the Messier Objects.

Public Domain, <https://commons.wikimedia.org/w/index.php?curid=1609343>



Rugby & District Astronomical Society

www.rugbyastro.org.uk

Honorary President:	-	Chair:	-
Treasurer:	Dennis Osborne	Membership Secretary:	Roland Clarke
Webmaster:	David Riley	Secretary:	Richard Heath
Speakers Secretary:	Chris Longthorn	Sky Notes:	Chris Longthorn

Email rugby-Astro@hotmail.co.uk

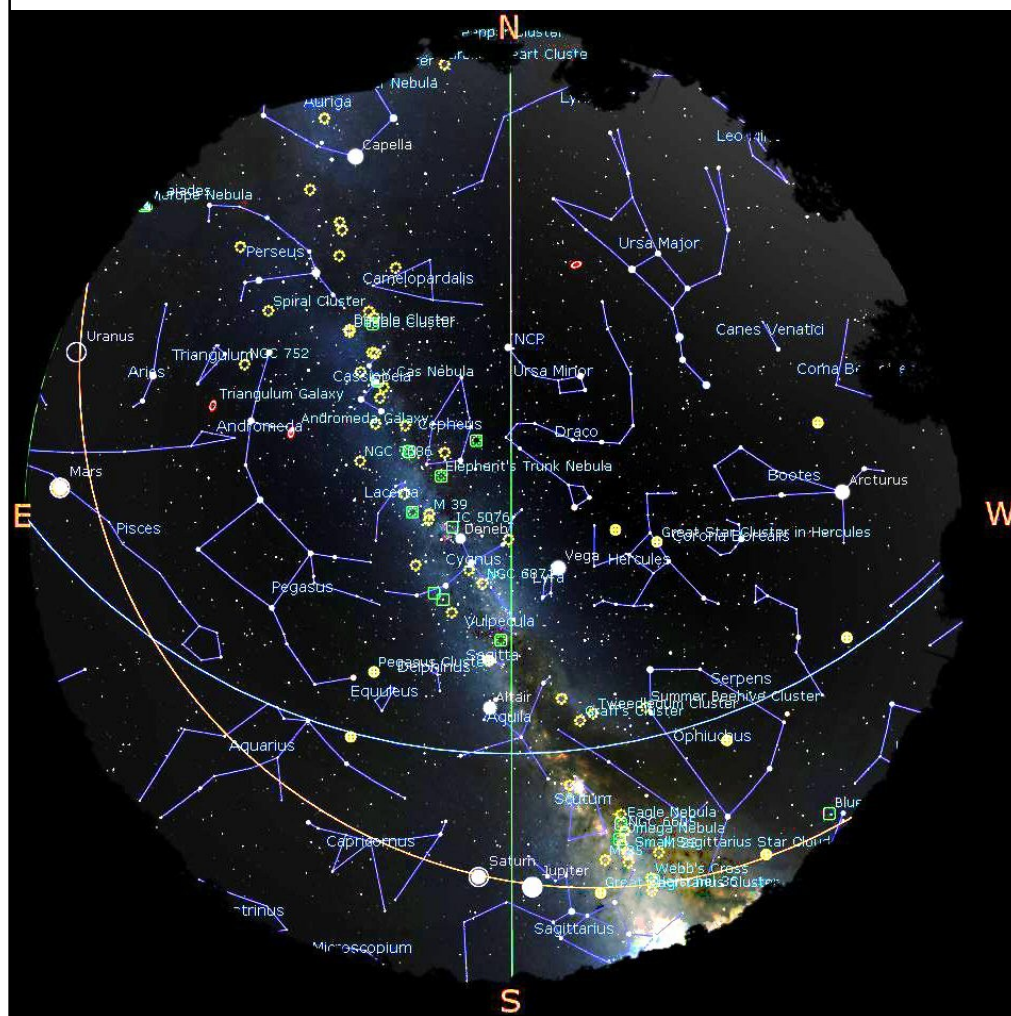
© R&DAS 2020

Rugby & District Astronomical Society

Sky Notes

by Chris Longthorn

August 2020, no 130

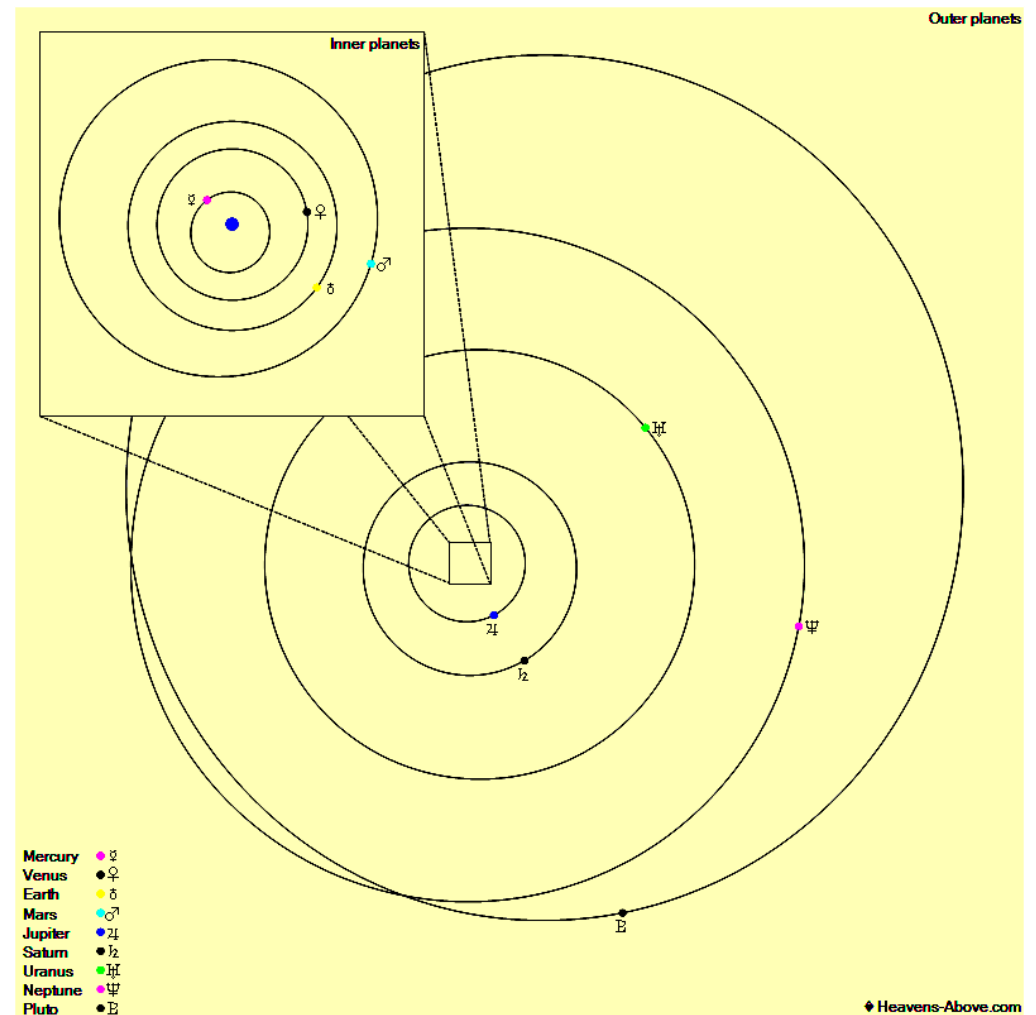


The night sky at 23:00 U.T.C., August 15th 2020

2020 August

Sunday	Monday	Tuesday	Wednesday	Thursday	Friday	Saturday
26	27 First Quarter 13:32 Delta Aquarids 2 2:08	28	29	30	31	1 Venus 45.2° W Mercury-Pol. 21:14
2 Moon-Jupiter 00:30 Moon-Saturn 14:17	3 Full Moon 16:59	4	5	6	7	8
9 Moon-Mars 08:57	10	11 Last Quarter 17:45	12 Perseids 14:02 Observing Perseids 20:30	13 Venus West 01:59	14	15 Moon-Venus 14:01
16 No Meeting	17 Mercury Super 15:47	18	19 New Moon 03:41	20	21	22
23	24	25 First Quarter 18:58	26	27	28	29 Moon-Jupiter 02:33 Moon-Saturn 17:40 ISS, -2, 04:58, 23°, SSE
30	31 ISS, -3, 04:58, 40°, SSE	1 Venus 44.7° W	2 Full Moon 06:22	3	4	5

The Planets, mid month.



Mercury is in Leo with a magnitude of -1.9, a phase of 100%, and a diameter of 5". It rises at 04:28, transits at 12:03, and sets at 19:36. It is currently too close to the Sun to be observed.

Venus is in Gemini with a magnitude of -4.3, a phase of 52%, and a diameter of 23". It rises at 01:02, transits at 08:59, and sets at 16:57. It is visible in the morning sky.

Mars is in Pisces with a magnitude of -1.4, a phase of 89%, and a diameter of 17". It transits at 04:03, sets at 10:34, and rises again at 21:29. It is visible in the morning sky.

Jupiter is in Sagittarius with a magnitude of -2.6 and a diameter of 46". It sets at 01:45, rises again at 17:53, and transits at 21:47. It is well placed for observation throughout the night.

Saturn is in Sagittarius with a magnitude of +0.2 and a diameter of 18". It sets at 02:30, rises again at 18:18, and transits at 22:22. It is well placed for observation throughout the night.

Uranus is in Aries with a magnitude of +5.7 and a diameter of 4". It transits at 05:03, sets at 12:24, and rises again at 21:37. It is visible in the morning sky.

Neptune is in Aquarius with a magnitude of +7.8 and a diameter of 2". It transits at 01:55, sets at 07:33, and rises again at 20:14. It is well placed for observation throughout the night.