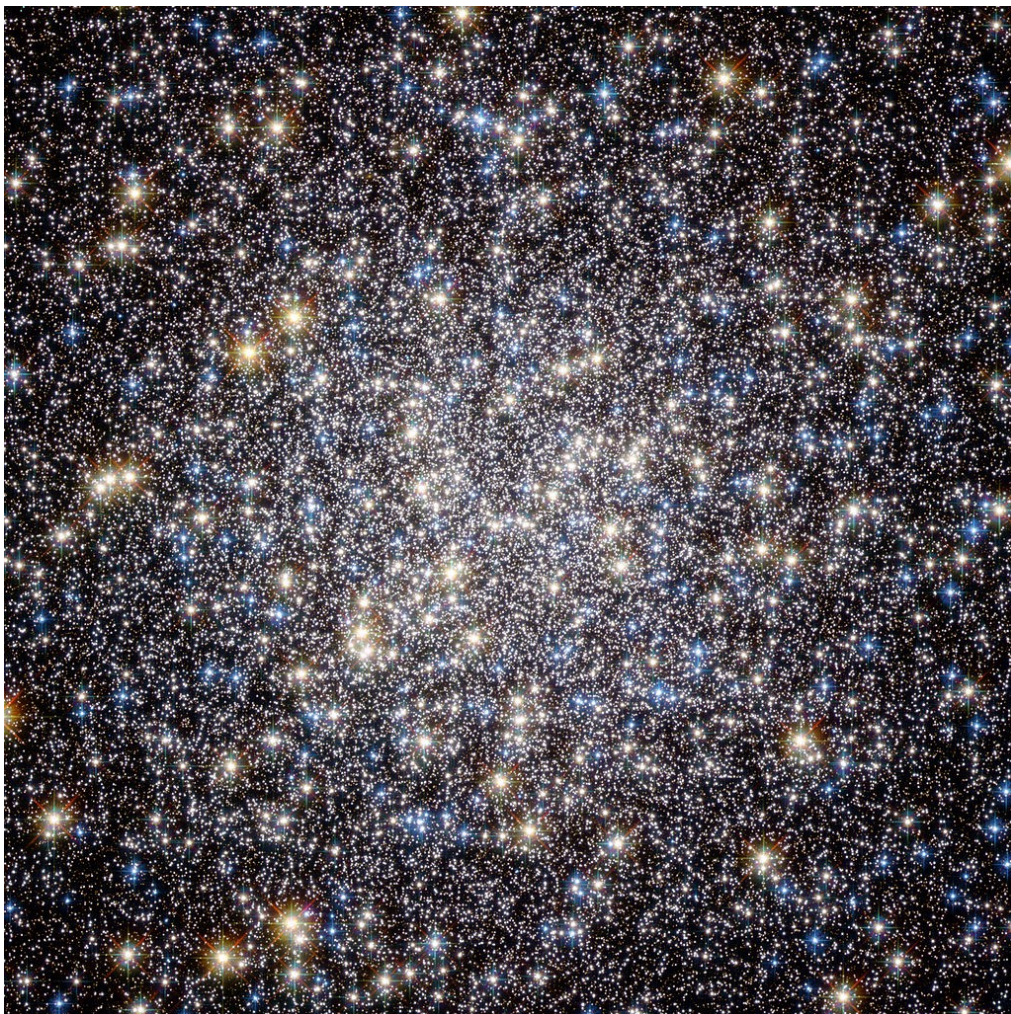


# M13 Globular Cluster, (Hercules)

Continuing a series of photograph's of the Messier Objects



**Rugby & District Astronomical Society**

[www.rugbyastro.org.uk](http://www.rugbyastro.org.uk)

Honorary President:	-	Chair:	Sarah Walker
Treasurer:	Dennis Osborne	Membership Secretary:	Roland Clarke
Webmaster:	David Riley	Secretary:	Richard Heath
Speakers Secretary:	Chris Longthorn	Sky Notes:	Chris Longthorn

Email [rugby-Astro@hotmail.co.uk](mailto:rugby-Astro@hotmail.co.uk)

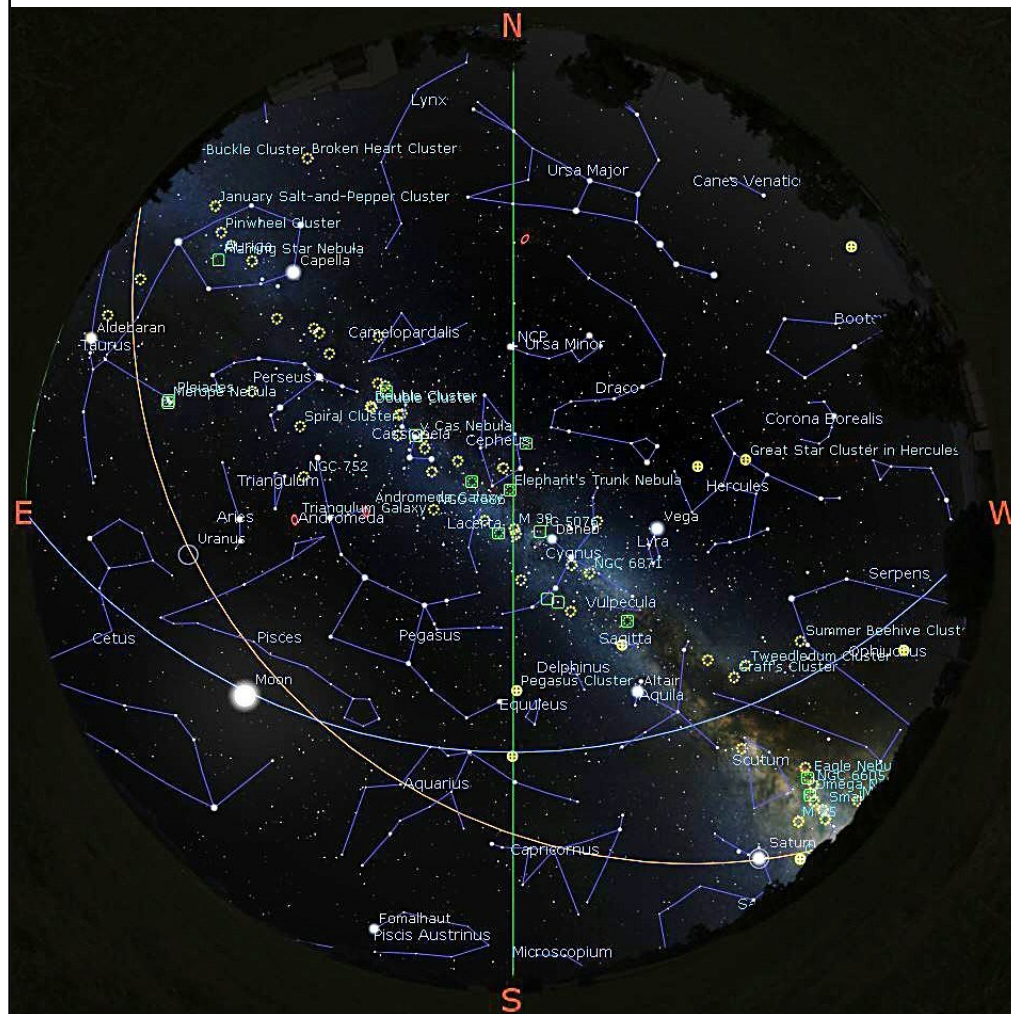
© R&DAS 2019

## Rugby & District Astronomical Society

### Sky Notes

by Chris Longthorn

September 2019, no 120

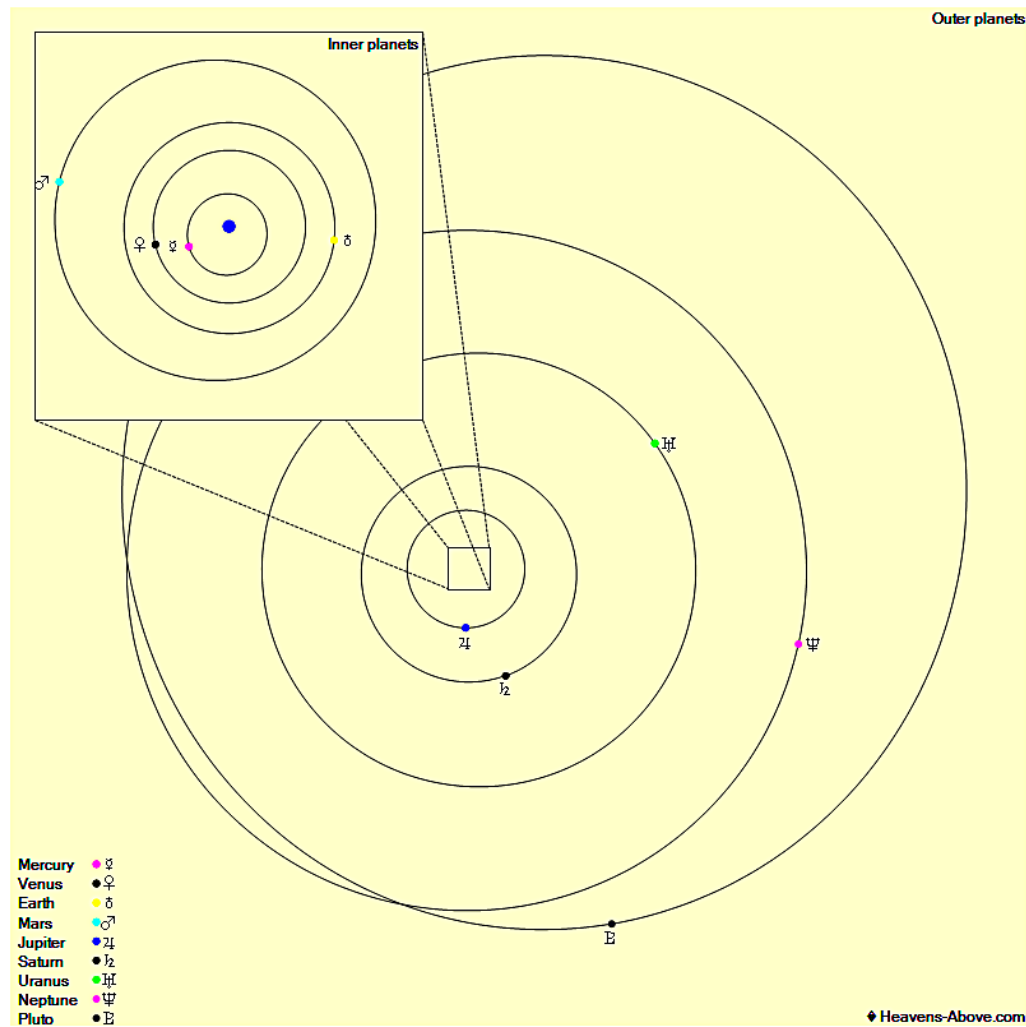


The night sky at 23:00 U.T.C., September 15th 2019

# 2019 September

Sunday	Monday	Tuesday	Wednesday	Thursday	Friday	Saturday
1 <b>Venus</b> 5.2° E	2 <b>Mars Sun</b> 11:18	3	4 <b>Mercury</b> Super 02:26	5	6  <b>First Quarter</b> 04:10 <b>Moon-Jupiter</b> 07:52	7
8 <b>Moon-Saturn</b> 14:53	9	10 <b>Neptune</b> Opp 07:18	11	12	13	14  <b>Full Moon</b> 05:33
15 <b>R&amp;DAS Meeting,</b> 19:30	16	17	18	19	20	21
22  <b>Last Quarter</b> 03:41	23 <b>Autumn Eq</b> 08:49  ISS, -3.3, 20:33, 43°, SSE	24 <b>Moon-Beehive</b> 22:15  ISS, -3.2, 21:19, 51°, WSW	25  ISS, -3.8, 20:30, 64°, SSE	26  ISS, -3.5, 19:40, 51°, SSE  ISS, -3.2, 21:16, 55°, WSW	27  ISS, -3.9, 20:26, 79°, S	28  <b>New Moon</b> 19:26  ISS, -3.7, 19:36, 72°, S  ISS, -3.1, 21:12, 50°, WSW
29  ISS, -3.9, 20:23, 78°, S	30  ISS, -3.8, 19:33, 81°, S	1 <b>Venus</b> 13.1° E	2	3 <b>Moon-Jupiter</b> 21:23	4	5  <b>First Quarter</b> 17:47  <b>Moon-Saturn</b> 21:48

## The Planets, mid month.



**Mercury** is in Virgo with a magnitude of -0.8, a phase of 96%, and a diameter of 5". It rises at 06:33, transits at 12:37, and sets at 18:40. It is visible low in the west after sunset.

**Venus** is in Virgo with a magnitude of -3.9, a phase of 99%, and a diameter of 10". It rises at 06:27, transits at 12:35, and sets at 18:42. It is visible low in the west after sunset.

**Mars** is in Leo with a magnitude of +1.8, a phase of 100%, and a diameter of 4". It rises at 05:13, transits at 11:46, and sets at 18:19. It is currently too close to the Sun to be observed.

**Jupiter** is in Ophiuchus with a magnitude of -2.1 and a diameter of 37". It rises at 13:34, transits at 17:28, and sets at 21:23. It is visible in the evening sky.

**Saturn** is in Sagittarius with a magnitude of +0.4 and a diameter of 17". It rises at 15:33, transits at 19:28, and sets at 23:22. It is visible in the evening sky.

**Uranus** is in Aries with a magnitude of +5.7 and a diameter of 4". It transits at 02:46, sets at 09:59, and rises again at 19:29. It is well placed for observation throughout the night.

**Neptune** is in Aquarius with a magnitude of +7.8 and a diameter of 2". It sets at 05:16, rises again at 18:10, and transits at 23:41. It is well placed for observation throughout the night.