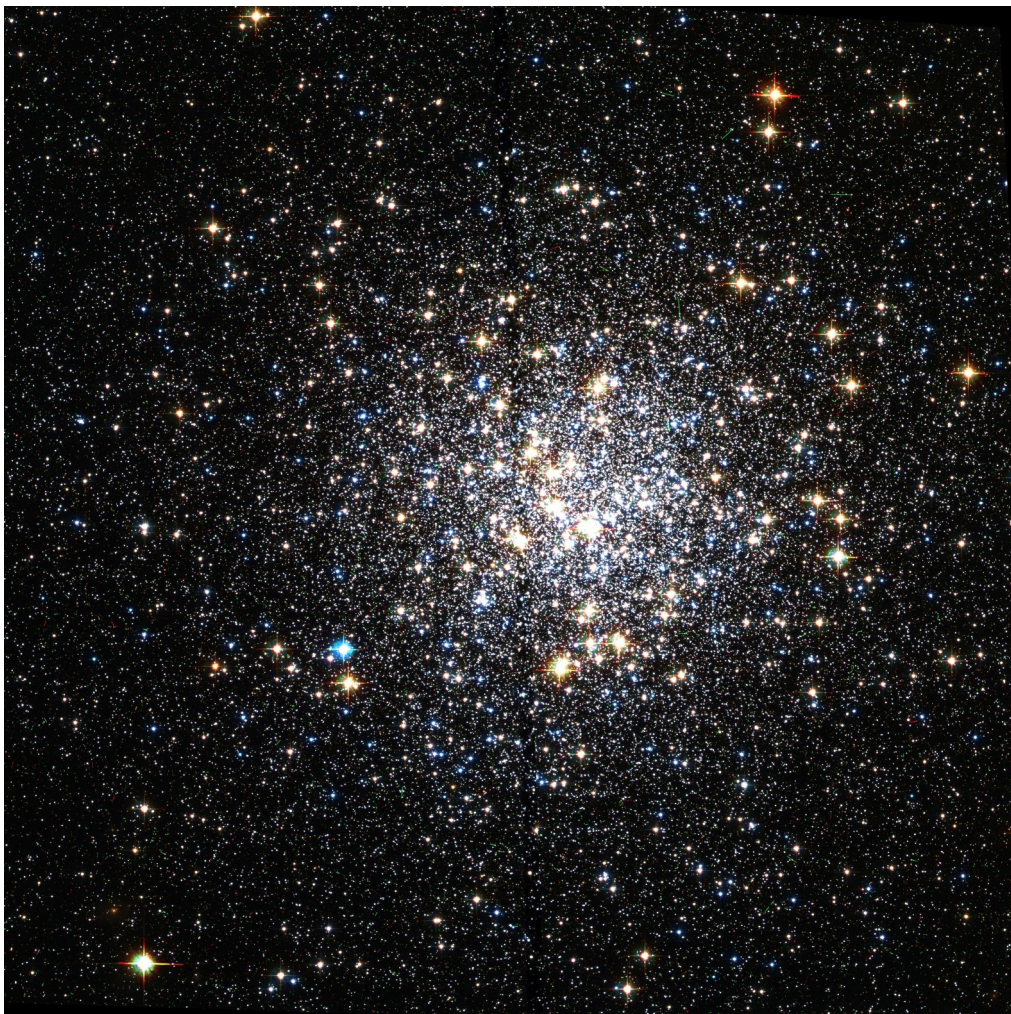


M9 Globular Cluster, Ophiuchus)

Continuing a series of photograph's of the Messier Objects



Rugby & District Astronomical Society

www.rugbyastro.org.uk

Honorary President:	-	Chair:	Vacant
Treasurer:	Dennis Osborne	Membership Secretary:	Roland Clarke
Webmaster:	David Riley	Secretary:	Richard Heath
Speakers Secretary:	Chris Longthorn	Sky Notes:	Chris Longthorn

Email rugby-Astro@hotmail.co.uk

© R&DAS 2019

Rugby & District Astronomical Society

Sky Notes

by Chris Longthorn

April 2019, no 116

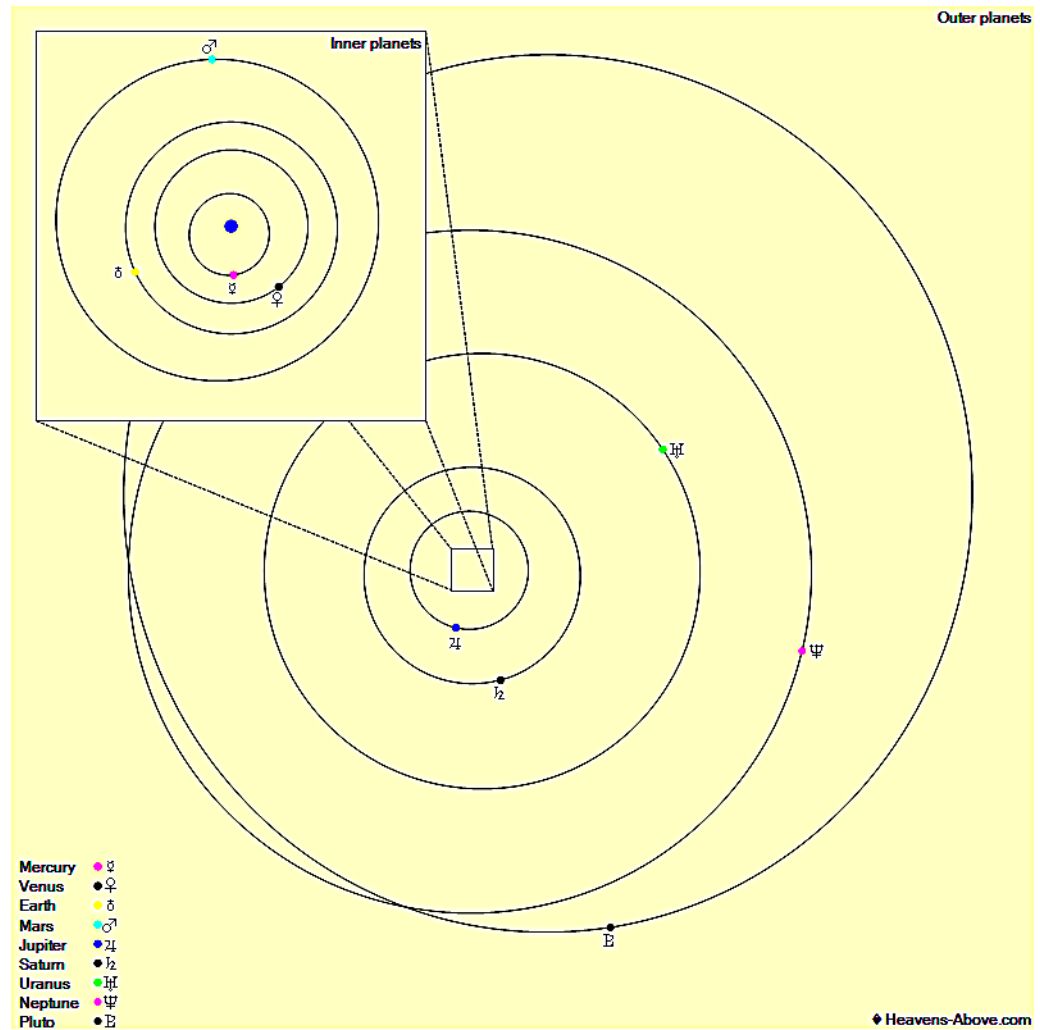


The night sky at 23:00 U.T.C., April 15th 2019

2019 April

Sunday	Monday	Tuesday	Wednesday	Thursday	Friday	Saturday
31 Observing @ Barby, 19:00	1 Moon Apogee 01:14 Venus 34.6° W ISS, -3.7, 20:44, 68°, S	2 Moon-Venus 05:17 ISS, -2.9, 21:29, 36°, SSW	3 Moon-Mercury 00:01 ISS, -3.2, 20:38, 48°, SSW	4 ISS, -1.9, 21:23, 21°, SSW ISS, -2.4, 20:32, 30°, SSW	5 New Moon 09:50	6
7	8	9 Moon-Mars 07:40 Moon-Aldeb 16:43	10	11 Mercury West 19:59	12 Moon N Dec 00:59 Moon A Node 19:08 First Quarter 20:06	13 Moon-Beehive 21:12
14	15 Mars-Aldeb. 01:08 Moon-Regulus 09:22	16 Mercury-Ven 19:03 Moon Perigee 23:02	17	18	19 Full Moon 12:12	20
21 R&DAS Meeting, 19:30	22	23 Lyrids 00:58 Uranus Sun 01:06 Moon-Jupiter 12:36	24 Moon S Dec 22:22	25 Moon-Saturn 15:38 Moon D Node 16:02	26 Last Quarter 23:18	27
28 Moon Apogee 19:20	29	30				

The Planets, mid month.



Mercury is in Pisces with a magnitude of +0.2, a phase of 54%, and a diameter of 7". It rises at 04:40, transits at 10:28, and sets at 16:16. It is visible low in the east before sunrise.

Venus is in Aquarius with a magnitude of -3.9, a phase of 85%, and a diameter of 12". It rises at 04:27, transits at 10:11, and sets at 15:56. It is visible in the morning sky.

Mars is in Taurus with a magnitude of +1.5, a phase of 95%, and a diameter of 4". It rises at 06:47, transits at 15:05, and sets at 23:23. It is visible in the evening sky.

Jupiter is in Ophiuchus with a magnitude of -2.4 and a diameter of 42". It rises at 00:15, transits at 04:08, and sets at 08:01. It is visible in the morning sky.

Saturn is in Sagittarius with a magnitude of +0.5 and a diameter of 17". It rises at 01:59, transits at 06:00, and sets at 10:02. It is visible in the morning sky.

Uranus is in Aries with a magnitude of +5.9 and a diameter of 3". It rises at 05:27, transits at 12:32, and sets at 19:37. It is currently too close to the Sun to be observed.

Neptune is in Aquarius with a magnitude of +7.9 and a diameter of 2". It rises at 04:15, transits at 09:48, and sets at 15:20. It is visible in the morning sky.