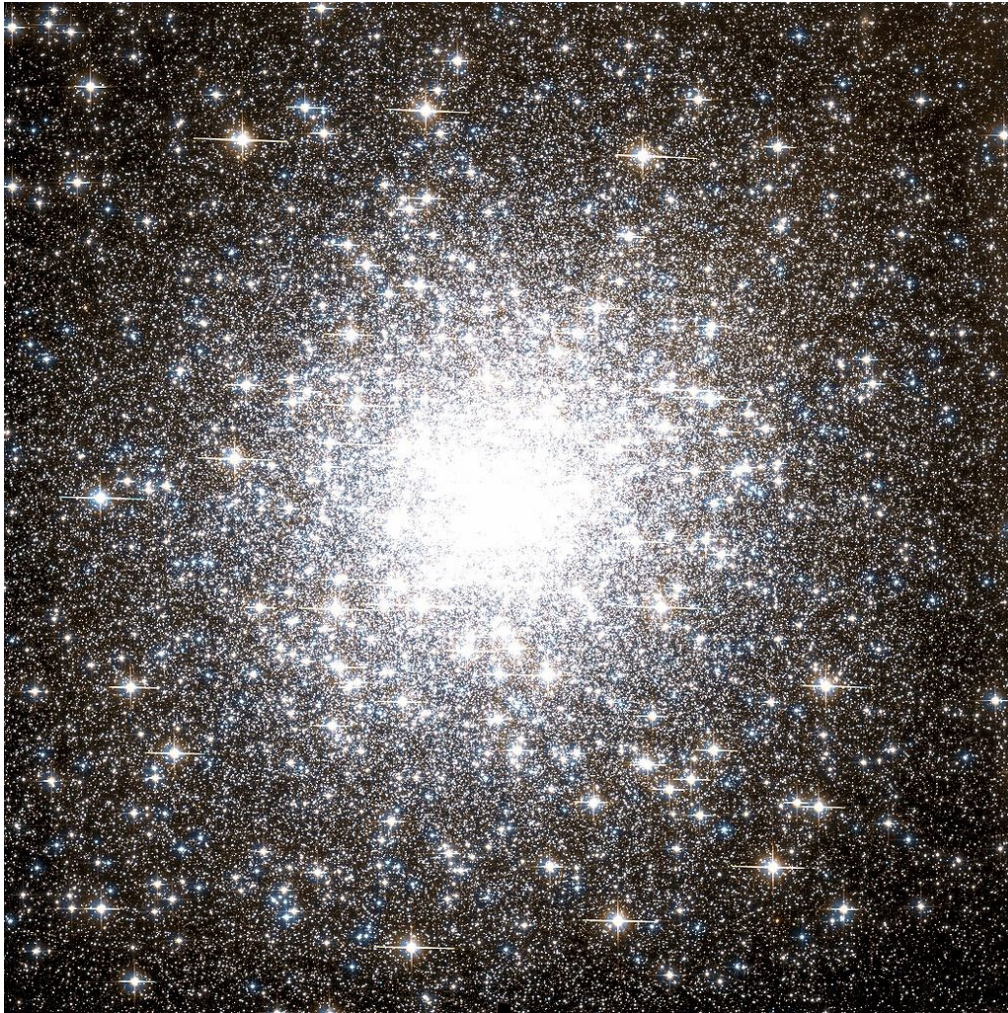


M2 (Globular Cluster—Hubble)

Continuing a series of photograph's of the Messier Objects



Rugby & District Astronomical Society

www.rugbyastro.org.uk

Honorary President:	-	Chair:	Vacant
Treasurer:	Dennis Osborne	Membership Secretary:	Roland Clarke
Webmaster:	David Riley	Secretary:	Richard Heath
Speakers Secretary:	Chris Longthorn	Sky Notes:	Chris Longthorn

Email rugby-Astro@hotmail.co.uk

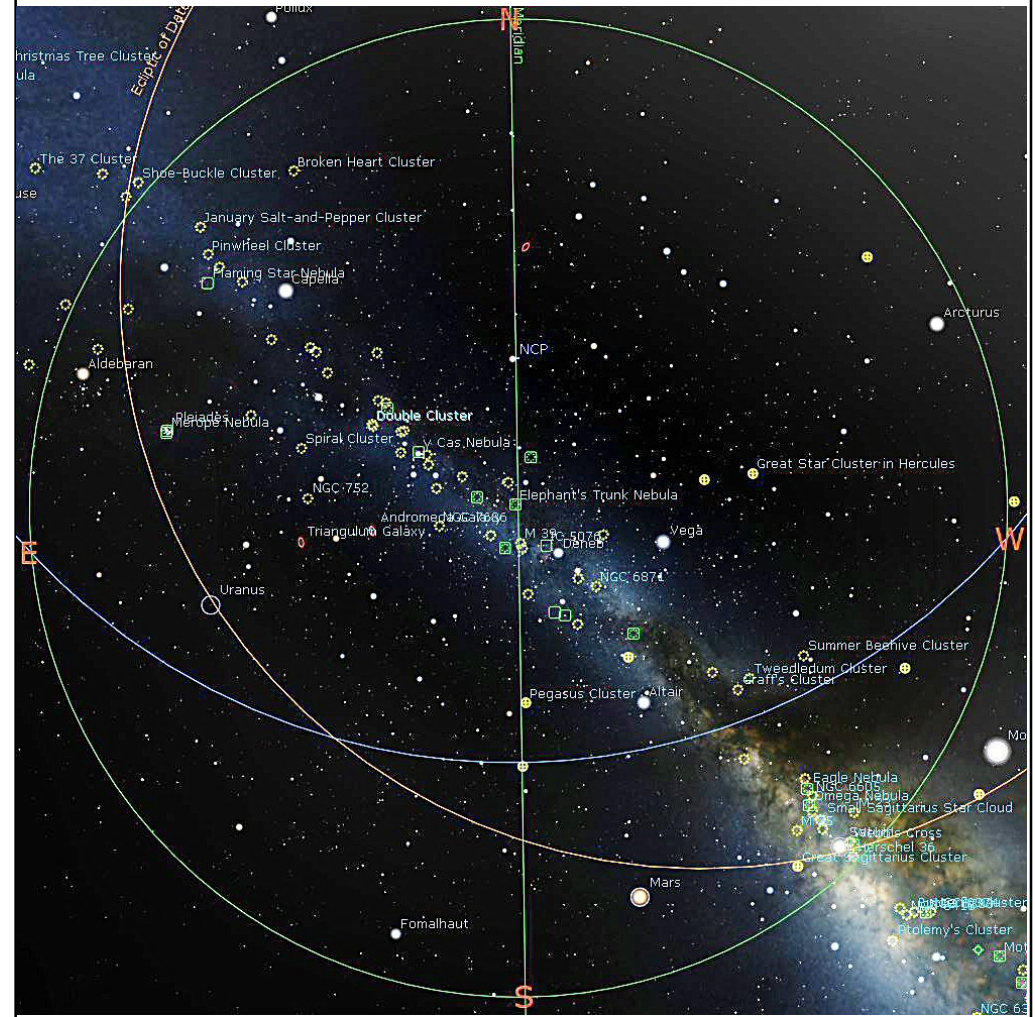
© R&DAS 2018

Rugby & District Astronomical Society

Sky Notes

by Chris Longthorn

September 2018, no 109

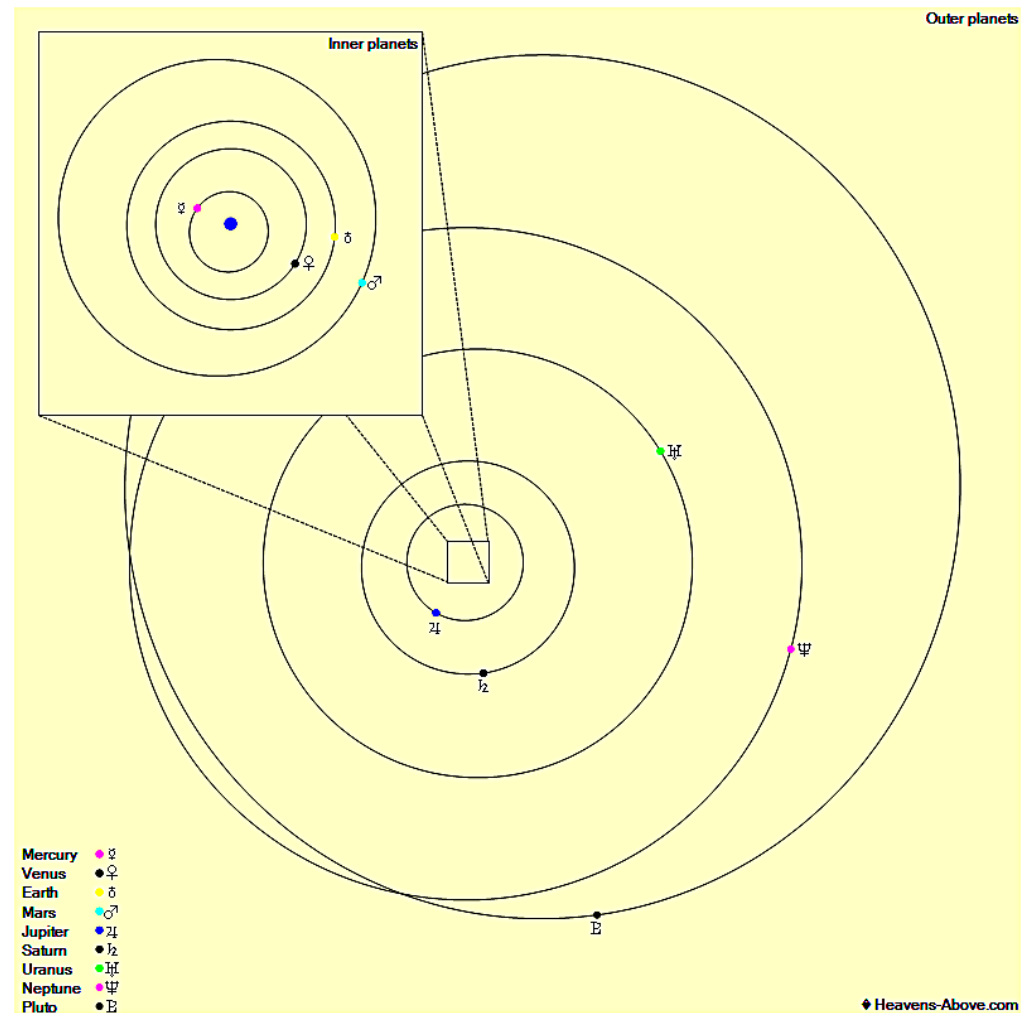


The night sky at 23:00 U.T.C., September 15th 2018

2018 September

Sunday	Monday	Tuesday	Wednesday	Thursday	Friday	Saturday
						1 Venus-Spica 05:45 Venus 45° E
2 ISS, -2.0, 21:40, 21° SSW	3 Moon- Aldeb 02:34 Last Quar- ter 03:37	4	5 Moon N Dec 07:56	6 Moon A Node 23:42	7 Moon- Beehive 03:13 Neptune Opp 18:19	8 Moon Per- igee 02:21
9 New Moon 19:01	10	11	12	13	14 Moon- Jupiter 03:21	15
16 R&DAS Meeting, Church Lawford, 19:30	17 First Quarter 00:15 Moon- Saturn 17:46	18 Moon S Dec 10:35	19	20 Moon Ap- ogee 01:54 Moon D Node 10:30	21 Mercury Super 02:47	22
23 Autumn Eq 02:54	24 ISS, -2.9, 20:45, 32°, SSE	25 Full Moon 03:53 ISS, -2.4, 19:53, 23°, SSE ISS, -2, 21:28, 27°, WSW	26 ISS, -3.6, 20:37, 50°, SSE	27 ISS, -3, 19:44, 36°, SSE ISS, -2.6, 21:19, 39°, WSW	28 ISS, -3.8, 20:28, 69°, S	29 ISS, -3.5, 19:36, 55°, SSE ISS, -2.9, 21:11, 47°, W
30 Moon- Aldeb 08:06 ISS, -3.9, 20:19, 80°, S						

The Planets, mid month.



Mercury is in Leo with a magnitude of -1.5, a phase of 99%, and a diameter of 5". It rises at 05:05, transits at 11:45, and sets at 18:22. It is currently too close to the Sun to be observed.

Venus is in Virgo with a magnitude of -4.5, a phase of 30%, and a diameter of 36". It rises at 10:00, transits at 14:27, and sets at 18:54. It is visible in the evening sky.

Mars is in Capricornus with a magnitude of -1.7, a phase of 91%, and a diameter of 18". It sets at 00:25, rises again at 17:05, and transits at 20:44. It is visible in the evening sky.

Jupiter is in Libra with a magnitude of -1.9 and a diameter of 34". It rises at 11:04, transits at 15:36, and sets at 20:07. It is visible in the evening sky.

Saturn is in Sagittarius with a magnitude of +0.5 and a diameter of 17". It rises at 14:45, transits at 18:38, and sets at 22:30. It is visible in the evening sky.

Uranus is in Aries with a magnitude of +5.7 and a diameter of 4". It transits at 02:29, sets at 09:34, and rises again at 19:20. It is well placed for observation throughout the night.

Neptune is in Aquarius with a magnitude of +7.8 and a diameter of 2". It sets at 05:02, rises again at 18:05, and transits at 23:31. It is well placed for observation throughout the night.