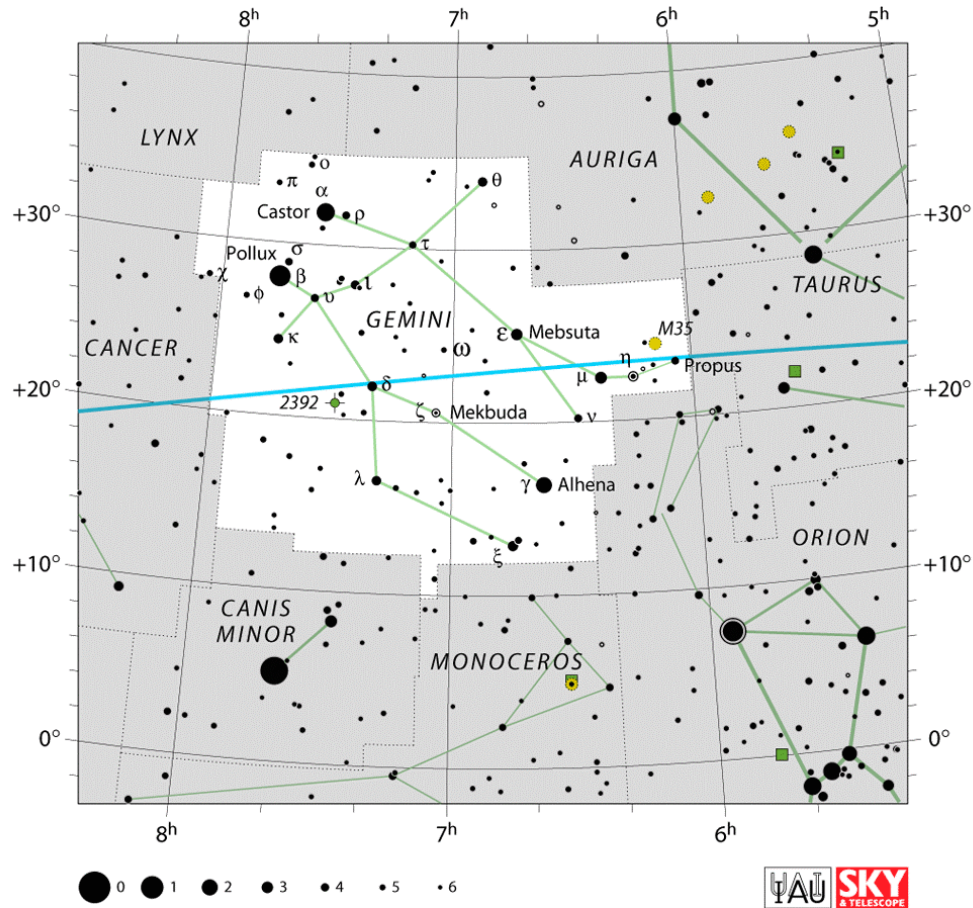


Constellation of the Month - Gemini

Your challenge is to observe, and record what you see ready for including in the Sky Notes presentation next month.

The Constellation of the Month will be selected from one that is readily visible most of the night during the month.

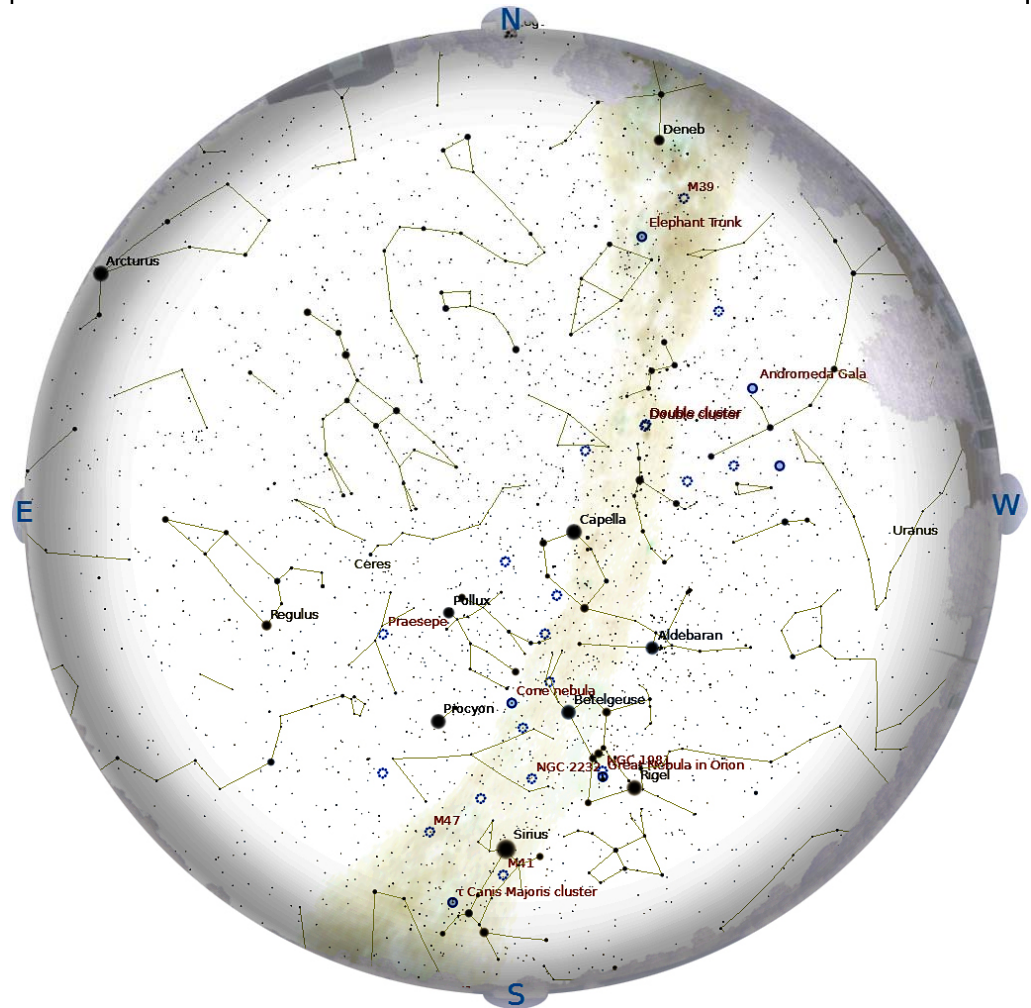


Rugby & District Astronomical Society

Sky Notes

by Chris Longthorn

January 2017, no 90



Rugby & District Astronomical Society

www.rugbyastro.org.uk





Honorary President:	Dr Johanna Jarvis	Chair:	Julian Leckie
Treasurer:	Dennis Osborne	Membership Secretary:	Barrie Chessell
Webmaster:	David Riley	Secretary:	David Partridge
Speakers Secretary:	Chris Longthorn	Sky Notes	Chris Longthorn

Email rugby-Astro@hotmail.co.uk

Phone 07739-716383
© R&DAS 2016

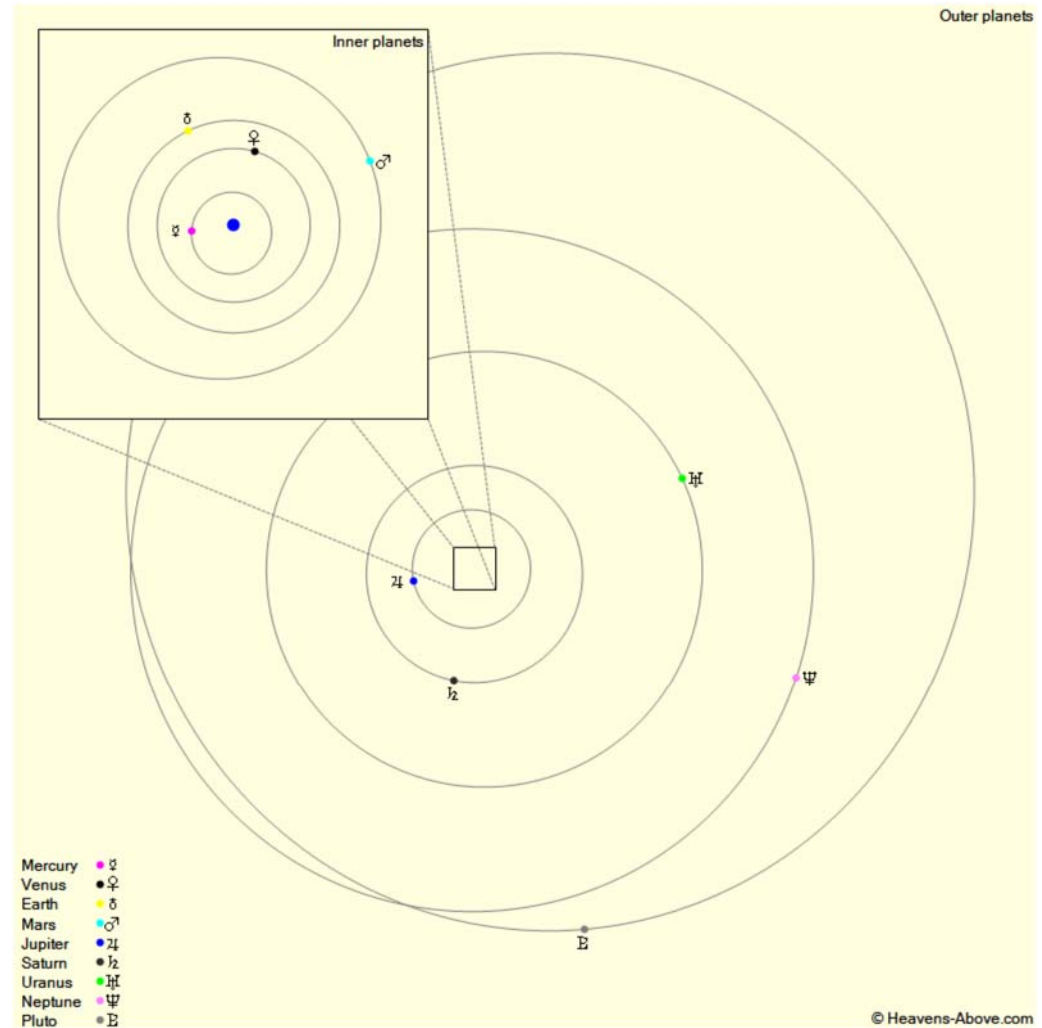
The night sky at 23:00 U.T.C., January 15th 2017

2017 January

Sunday	Monday	Tuesday	Wednesday	Thursday	Friday	Saturday
1 Venus 46.8° E	2 Moon-Venus 09:20 Moon D Node 18:14	3 Moon-Mars 06:47 (occultation) Quadrantids 14:10	4 Perihelion 10:59	5  5 First Quarter 19:47	6	7
8	9 Mercury-Sat 09:03 Moon-Aldeb 14:07 Iridium 55 16:25, -7.7, 72°, 91° (E)	10 Moon Perigee 06:07	11 Moon N Dec 09:32	12  12 Full Moon 11:34 Venus East 12:59	13	14
15 Moon-Regulus 04:07 Moon A Node 10:45 R&DAS Quiz Night, 19:30	16	17	18	19  19 Moon-Jupiter 05:26 Mercury West 09:59 Last Quarter 22:14	20	21 CAWAS Ob- serving, Princethorpe Coledge Iridium 7 17:25, -4.6, 65°, 51° (NE)
22 Moon Apogee 00:14	23	24 Moon-Saturn 10:37	25 Moon S Dec 11:59	26 Moon-Mercury 00:46	27 R&DAS Ob- serving Barby	28  28 New Moon 00:07 Iridium 13 18:48, -6.4, 44°, 27° (NNE)
29 Moon D Node 22:21	30	31 Jup-Spica 06:12 Moon-Venus 14:34 ISS, -2.1, 18:49, 28°, SSE				

Sky Events Calendar by Fred Espenak and Sumit Dutta (NASA's GSFC)
ISS, Iridium Data and Solar System Map courtesy of Heavens-Above (www.heavens-above.com)

The Planets, mid month.



Mercury is in Sagittarius with a magnitude of -0.1, a phase of 56%, and a diameter of 7". It rises at 06:41, transits at 10:38, and sets at 14:34. It is visible low in the east before sunrise.

Venus is in Aquarius with a magnitude of -4.5, a phase of 49%, and a diameter of 25". It rises at 10:01, transits at 15:26, and sets at 20:52. It is visible in the evening sky.

Mars is in Aquarius with a magnitude of +1.0, a phase of 91%, and a diameter of 5". It rises at 10:15, transits at 15:55, and sets at 21:36. It is visible in the evening sky.

Jupiter is in Virgo with a magnitude of -2.0 and a diameter of 37". It rises at 00:33, transits at 05:55, and sets at 11:18. It is visible in the morning sky.

Saturn is in Ophiuchus with a magnitude of +0.5 and a diameter of 15". It rises at 06:07, transits at 10:00, and sets at 13:52. It is visible in the morning sky.

Uranus is in Pisces with a magnitude of +5.8 and a diameter of 4". It sets at 00:34, rises again at 11:02, and transits at 17:46. It is visible in the evening sky.

Neptune is in Aquarius with a magnitude of +7.9 and a diameter of 2". It rises at 10:01, transits at 15:17, and sets at 20:33. It is visible in the evening sky.