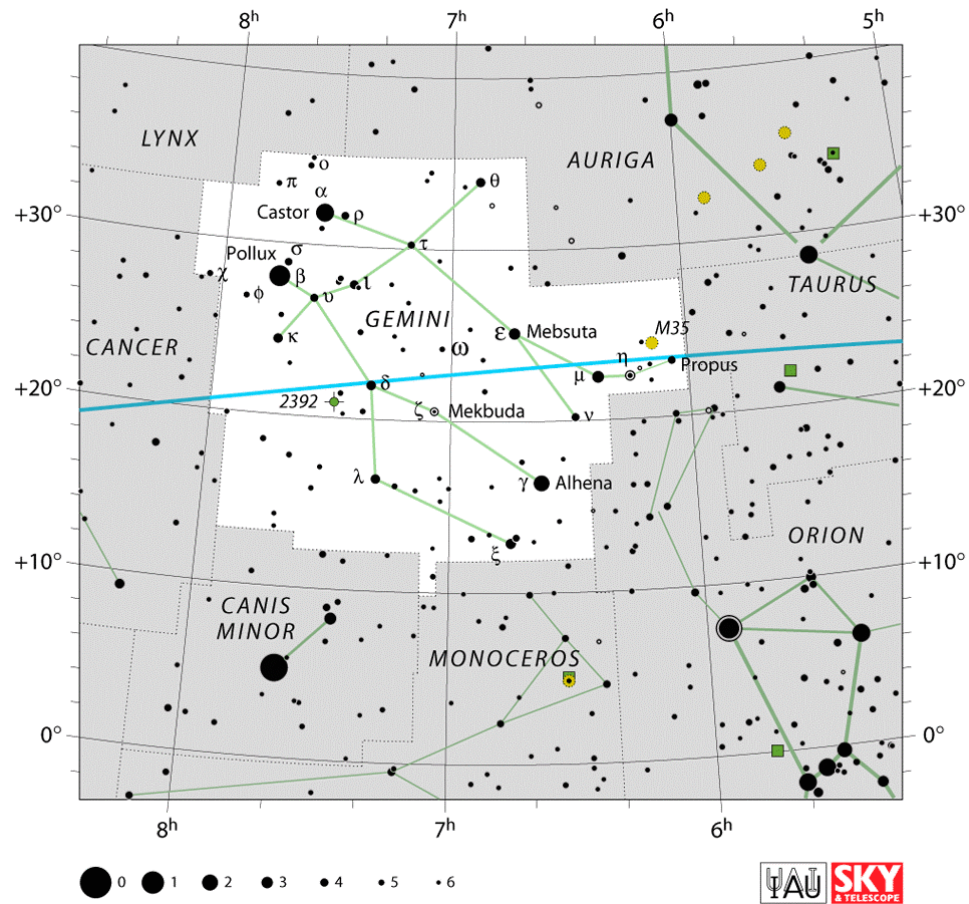


Constellation of the Month - Gemini

Your challenge is to observe, and record what you see ready for including in the Sky Notes presentation next month.

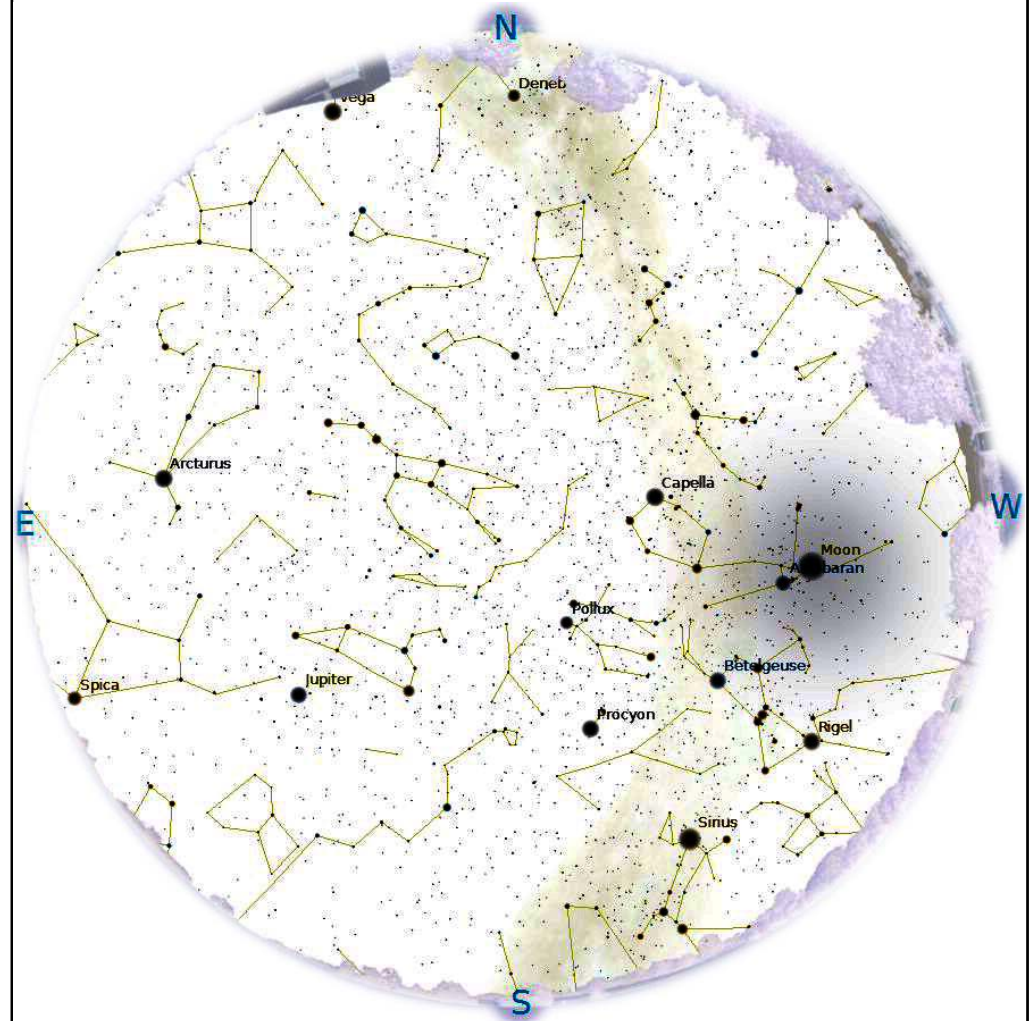
The Constellation of the Month will be selected from one that is readily visible most of the night during the month.



Rugby & District Astronomical Society Sky Notes

by Chris Longthorn

Feb 2016, no 79



Rugby & District Astronomical Society

www.rugbyastro.org.uk

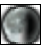

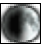

Honorary President:	Dr Johanna Jarvis	Chair:	Julian Leckie
Treasurer:	Sarah Meek	Membership Secretary:	Barrie Chessell
Webmaster:	David Riley	Secretary:	David Partridge
Speakers Secretary:	Chris Longthorn	Sky Notes:	Chris Longthorn

Email rugby-Astro@hotmail.co.uk

Phone 07739-716383
© R&DAS 2015

The night sky at 23:00 U.T.C., February 15th
2016

2016 February

Sunday	Monday	Tuesday	Wednesday	Thursday	Friday	Saturday
	 1 Last Quarter 03:28 Moon-Mars 08:48 Venus 31.4° W	2	3 Moon-Saturn 19:05	4	5 Moon S Dec 04:34 R&DAS Observing, Barby	6 Moon-Venus 07:32 Moon-Mercury 16:47
7 Mercury West 00:59	 8 New Moon 14:39	9	10 Moon D Node 20:46	11 Moon Perigee 02:42, Iridium 67 19:22:39, -7.5, 36°, 18° (NNE),	12	13 Mercury-Ven 02:32 CAWAS Observing, Princethorpe
14	 15 First Quarter 07:46	16 Moon-Aldeb 07:41	17 Moon N Dec 23:18	18 Iridium 81, 17:17:46, -6.7, 34°, 208° (SSW)	19	20
21 R&DAS Monthly Meeting @7:30	 22 Moon-Regulus 12:48 Full Moon 18:20	23	24 Moon-Jupiter 03:58 Moon A Node 06:10	25 Iridium 22, 20:21:36, -6.3, 15°, 7° (N)	26	27 Moon Apogee 03:28 Iridium 62, 18:02:20, -8.3, 64°, 17° (NNE)
28 Neptune Sun 15:17	29 Moon-Mars 18:16					

Bright Iridium Flares February 2016

Day	Time	Brightness	Altitude	Azimuth	Satellite
Feb 2	18:10:51	-5.2	11°	290° (WNW)	Iridium 86
Feb 4	17:40:57	-4.1	17°	283° (WNW)	Iridium 53
Feb 5	17:21:31	-4.5	20°	279° (W)	Iridium 90
Feb 5	17:25:57	-5	19°	280° (W)	Iridium 10
Feb 11	19:22:39	-7.5	36°	18° (NNE)	Iridium 67
Feb 18	17:17:46	-6.7	34°	208° (SSW)	Iridium 81
Feb 18	18:48:31	-4	49°	18° (NNE)	Iridium 67
Feb 19	18:42:19	-5	51°	19° (NNE)	Iridium 72
Feb 25	20:21:36	-6.3	15°	7° (N)	Iridium 22
Feb 27	18:02:20	-8.3	64°	17° (NNE)	Iridium 62
Feb 28	17:55:57	-4.6	10°	276° (W)	Iridium 80
Feb 28	20:02:05	-7	24°	9° (N)	Iridium 11

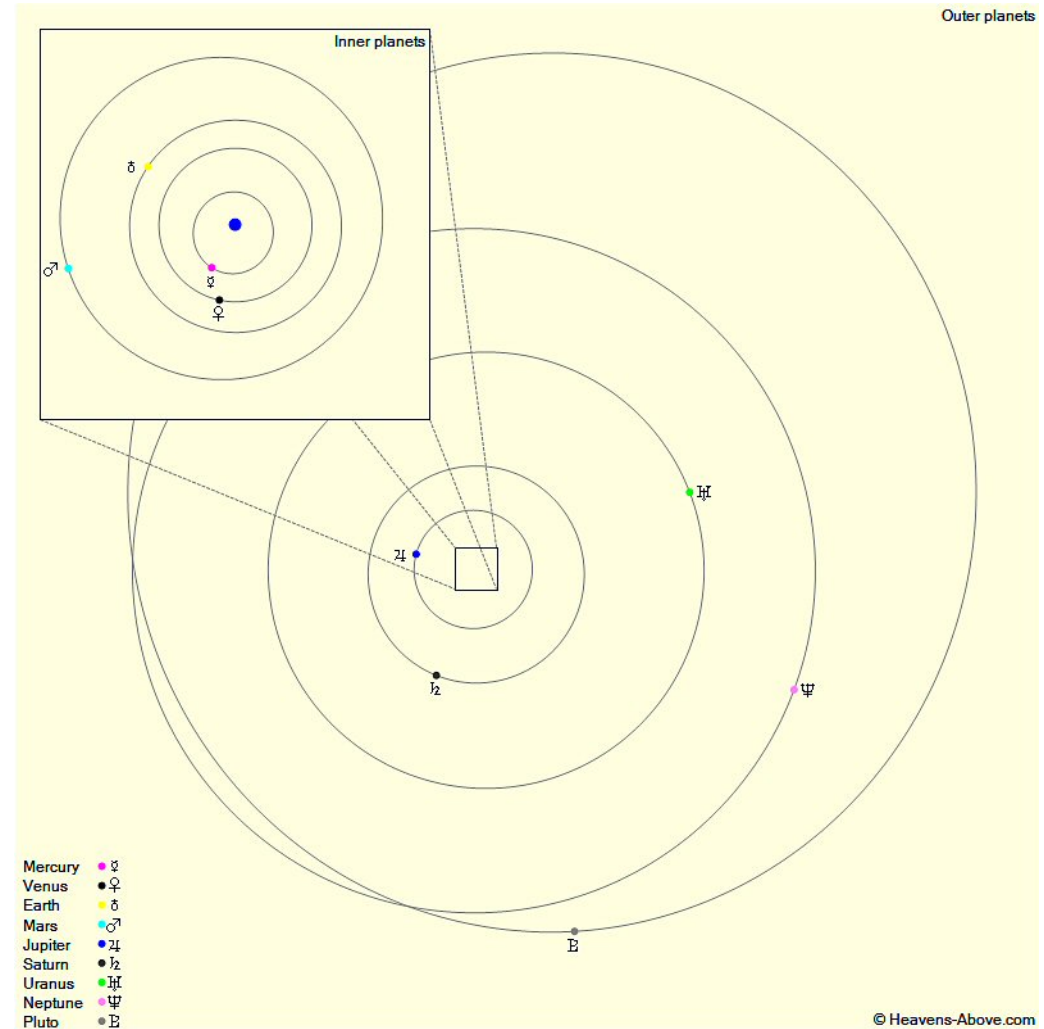
For ISS passes this month see later.

For a full list of sociably visible Iridium Flares this month see later.

ISS Passes February 2016

Date	Brightness (mag)	Start			Highest point			End		
		Time	Alt.	Az.	Time	Alt.	Az.	Time	Alt.	Az.
02-Feb	-0.7	19:14:51	10°	SSW	19:15:18	12°	S	19:15:18	12°	S
03-Feb	-1.1	18:22:05	10°	S	18:23:40	13°	SE	18:23:56	13°	SE
03-Feb	-0.1	19:56:23	10°	SW	19:56:30	11°	SW	19:56:30	11°	SW
04-Feb	-2	19:02:47	10°	SW	19:05:02	28°	S	19:05:02	28°	S
05-Feb	-1.7	18:09:25	10°	SSW	18:11:58	22°	SSE	18:13:28	16°	ESE
05-Feb	-0.9	19:44:46	10°	WSW	19:46:02	21°	WSW	19:46:02	21°	WSW
06-Feb	-3	18:50:59	10°	SW	18:54:06	48°	SSE	18:54:24	46°	SE
07-Feb	-2.3	17:57:18	10°	SW	18:00:16	34°	SSE	18:02:42	14°	E
07-Feb	-1.9	19:33:11	10°	W	19:35:16	36°	WSW	19:35:16	36°	WSW
08-Feb	-3.3	18:39:16	10°	WSW	18:42:29	65°	SSE	18:43:31	38°	E
08-Feb	-0.1	20:15:33	10°	W	20:16:04	14°	W	20:16:04	14°	W
09-Feb	-2.8	17:45:24	10°	WSW	17:48:33	50°	SSE	17:51:42	10°	E
09-Feb	-2.9	19:21:34	10°	W	19:24:17	59°	WSW	19:24:17	59°	WSW
10-Feb	-3.4	18:27:34	10°	W	18:30:49	78°	S	18:32:29	26°	E
10-Feb	-0.6	20:03:54	10°	W	20:05:02	20°	W	20:05:02	20°	W
11-Feb	-3.4	19:09:53	10°	W	19:13:07	73°	S	19:13:13	72°	SSE
12-Feb	-3.3	18:15:50	10°	W	18:19:04	80°	S	18:21:24	18°	E
12-Feb	-1.2	19:52:12	10°	W	19:53:57	26°	WSW	19:53:57	26°	WSW
13-Feb	-3	18:58:06	10°	W	19:01:18	58°	SSW	19:02:09	40°	SE
14-Feb	-3.2	18:04:01	10°	W	18:07:14	72°	S	18:10:23	11°	ESE
14-Feb	-1.6	19:40:30	10°	W	19:42:56	27°	SW	19:42:56	27°	SW
15-Feb	-2.3	18:46:17	10°	W	18:49:21	40°	SSW	18:51:13	20°	SE
16-Feb	-2.7	17:52:07	10°	W	17:55:18	55°	SSW	17:58:28	10°	ESE
16-Feb	-1	19:28:56	10°	W	19:31:12	18°	SW	19:32:08	16°	SSW
17-Feb	-1.4	18:34:28	10°	W	18:37:15	26°	SSW	18:40:01	10°	SSE
18-Feb	-0.2	19:18:19	10°	SW	19:18:56	10°	SW	19:19:27	10°	SSW
19-Feb	-0.5	18:22:49	10°	WSW	18:24:59	17°	SW	18:27:07	10°	S

The Planets, mid month.



Mercury is in Capricornus with a magnitude of -0.1, a phase of 74%, and a diameter of 6". It rises at 06:33, transits at 10:43, and sets at 14:53. It is visible low in the east before sunrise.

Venus is in Sagittarius with a magnitude of -3.9, a phase of 88%, and a diameter of 12". It rises at 06:18, transits at 10:25, and sets at 14:34. It is visible low in the east before sunrise.

Mars is in Libra with a magnitude of +0.6, a phase of 90%, and a diameter of 8". It rises at 01:14, transits at 05:45, and sets at 10:17. It is visible in the morning sky.

Jupiter is in Leo with a magnitude of -2.4 and a diameter of 44". It transits at 01:56, sets at 08:24, and rises again at 19:24. It is well placed for observation throughout the night.

Saturn is in Ophiuchus with a magnitude of +0.5 and a diameter of 16". It rises at 03:17, transits at 07:22, and sets at 11:27. It is visible in the morning sky.

Uranus is in Pisces with a magnitude of +5.9 and a diameter of 3". It rises at 08:55, transits at 15:31, and sets at 22:07. It is visible in the evening sky.

Neptune is in Aquarius with a magnitude of +8.0 and a diameter of 2". It rises at 07:53, transits at 13:09, and sets at 18:25. It is visible low in the west after sunset.

Detailed Map of Gemini

Gemini is the 30th largest constellation in the sky, occupying an area of 514 square degrees.

It lies in the northern hemisphere and can be seen at latitudes between $+90^\circ$ and -60° .

The neighbouring constellations are Auriga, Cancer, Canis Minor, Lynx, Monoceros, Orion and Taurus.

