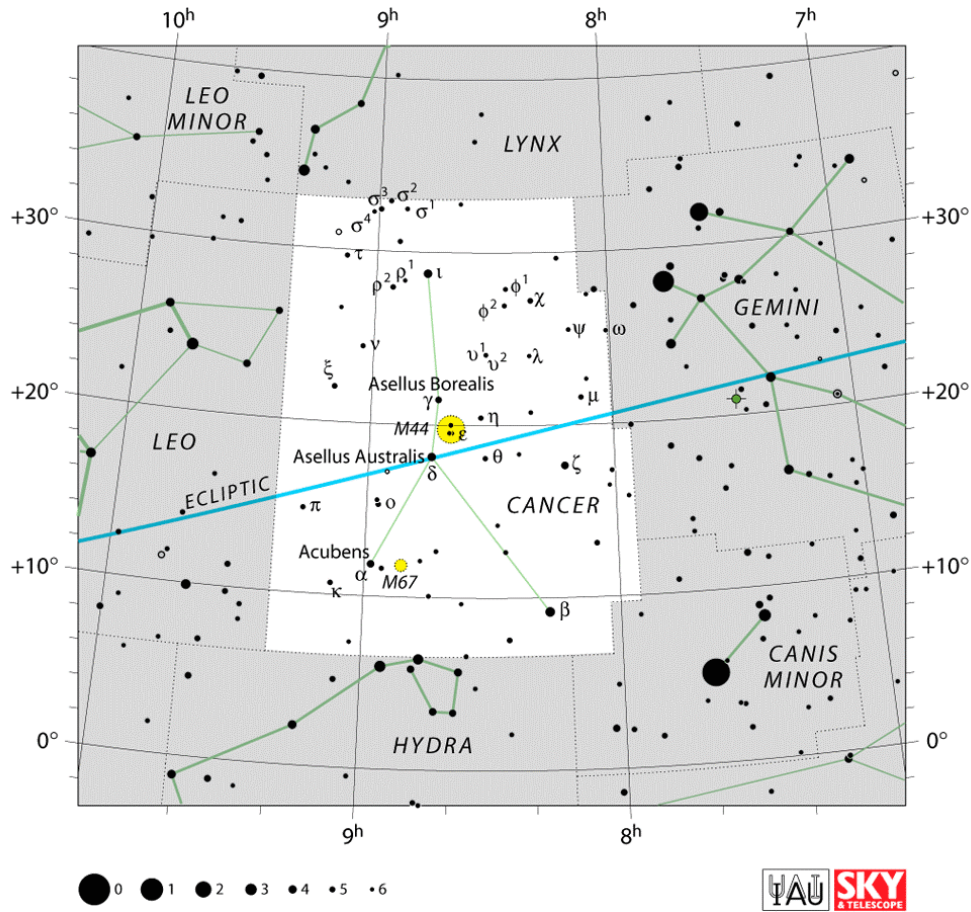


Constellation of the Month - Cancer.

Your challenge is to observe, and record what you see ready for including in the Sky Notes presentation next month.

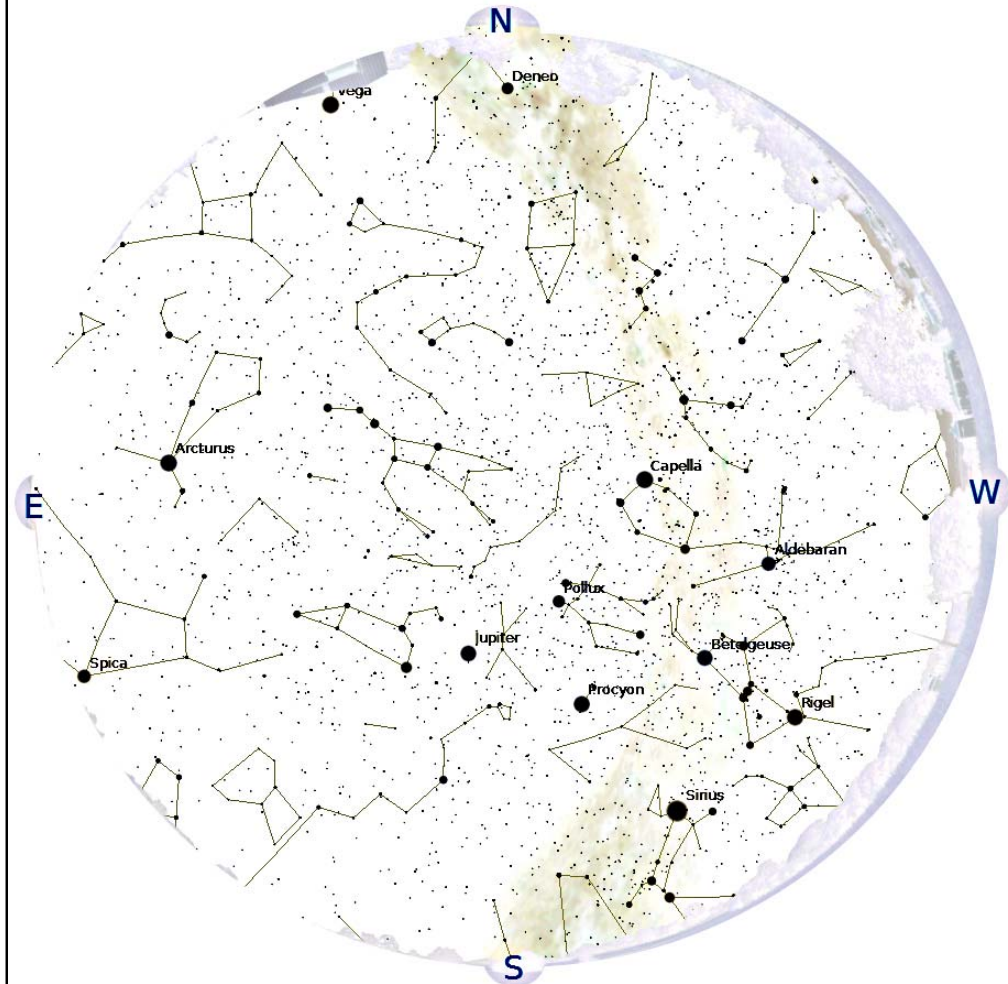
The Constellation of the Month will be selected from one that is readily visible most of the night during the month.



Rugby & District Astronomical Society Sky Notes

by Chris Longthorn

February 2015, no 68



Rugby & District Astronomical Society

www.rugbyastro.org.uk

Honorary President:	Roger Jackson	Chair:	Dr Johanna Jarvis
Treasurer :	Sarah Meek	Membership Secretary	Barrie Chessell
Webmaster	David Riley	Secretary:	Lesley Dyke
Sky Notes	Chris Longthorn		

Email rugby-Astro@hotmail.co.uk

Phone 07739-716383

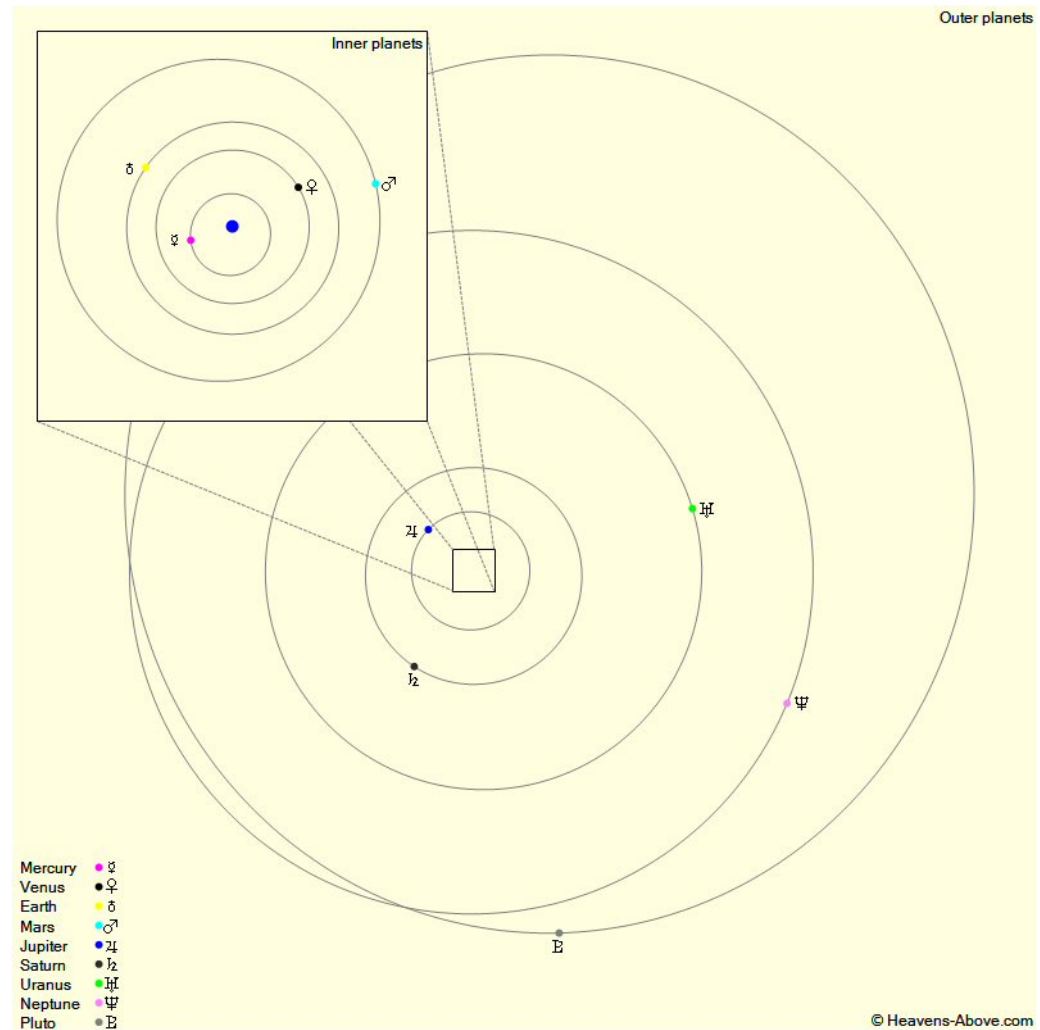
© R&DAS 2014

The night sky at 23:00 U.T.C., Feb 15th

Event Calendar, February 2015

The Planets, mid month.

Sunday	Monday	Tuesday	Wednesday	Thursday	Friday	Saturday
1 Venus 23.8° E	2	 3 Full Moon 23:09	4	5	6 Moon Apogee 06:25 Jupiter Opp 16:55	7
8 Moon A Node 17:10	9	10	11 ISS, -3.2 19:20:06 71° SSW Iridium 75, 05:53 -7.6 40° 1°	 12 Last Quarter 03:50 ISS, -3.1 18:28:01 62° SSE	13 Moon-Saturn 00:10 R&DAS 17:30, Observing Barbby ISS, -3.5 19:12:07 81° S	14 Moon S Dec 17:18 ISS, -3.3 18:19:46 77° S
15 R&DAS Meeting 19:30, Church Lawford ISS, -3.3 19:03:49 74° S Iridium 70, 05:29 -6.3 33° 4° Iridium 72, 17:15 -6.6 31° 210°	16 ISS, -3.3 18:11:24 80° S	17 Moon-Mercury 06:20	 18 New Moon 23:47 ISS, -3.1 20:29:28 71° S	19 Moon Perigee 07:29	20	21 Moon-Venus 00:56 Moon-Mars 01:28 Moon D Node 16:05
22 Venus-Mars 05:18	23	24 Mercury West 15:59	 25 First Quarter 17:14 Moon-Aldeb 23:02	26 Neptune Sun 04:18	27 Moon N Dec 07:19	28 R&DAS 18:00, Observing Barbby Iridium 49, 17:50 -7.5 46° 194°



Mercury is in Capricornus with a magnitude of +0.3, a phase of 41%, and a diameter of 8". It rises at 06:16, transits at 10:41, and sets at 15:05. It is visible low in the east before sunrise.

Venus is in Aquarius with a magnitude of -3.9, a phase of 89%, and a diameter of 12". It rises at 08:18, transits at 14:02, and sets at 19:48. It is visible low in the west after sunset.

Mars is in Pisces with a magnitude of +1.2, a phase of 97%, and a diameter of 4". It rises at 08:20, transits at 14:13, and sets at 20:06. It is visible low in the west after sunset.

Jupiter is in Cancer with a magnitude of -2.5 and a diameter of 45". It sets at 07:19, rises again at 16:04, and transits at 23:39. It is well placed for observation throughout the night.

Saturn is in Scorpius with a magnitude of +0.5 and a diameter of 16". It rises at 02:19, transits at 06:36, and sets at 10:54. It is visible in the morning sky.

Uranus is in Pisces with a magnitude of +5.9 and a diameter of 3". It rises at 08:48, transits at 15:16, and sets at 21:44. It is visible in the evening sky.

Neptune is in Aquarius with a magnitude of +8.0 and a diameter of 2". It rises at 07:48, transits at 13:00, and sets at 18:12. It is visible low in the west after sunset.