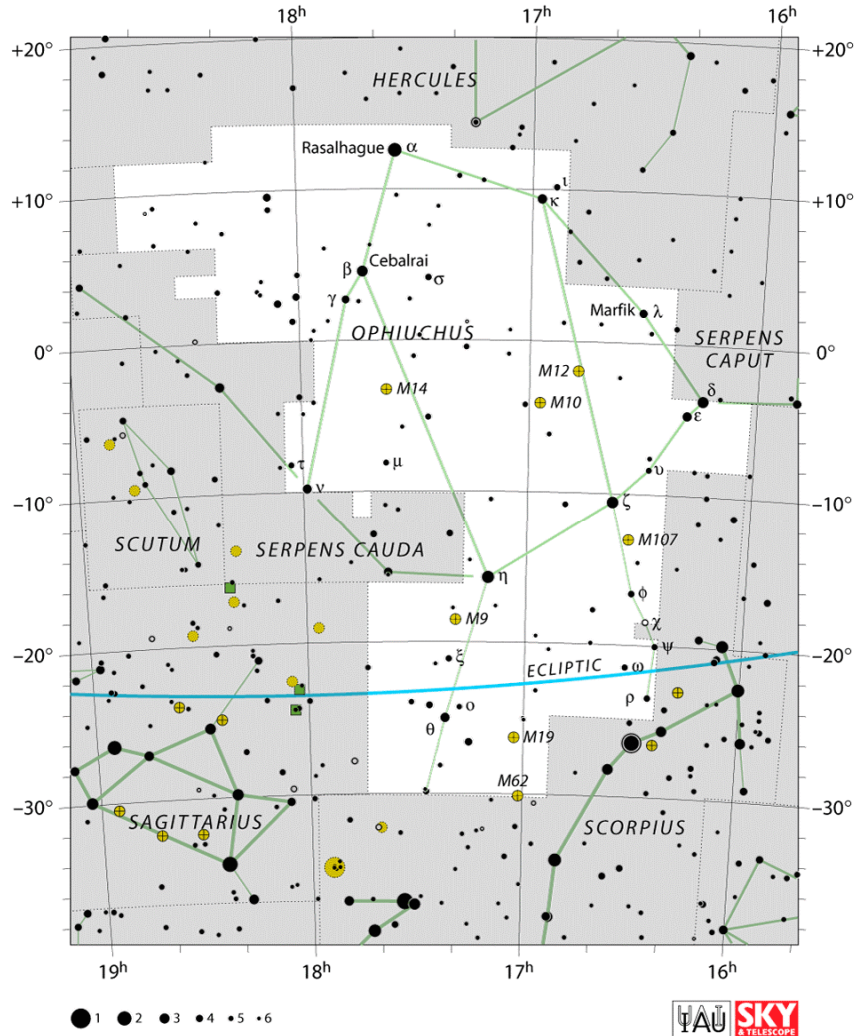


Constellation of the Month - Ophiuchus.

Your challenge is to observe, and record what you see ready for including in the Sky Notes presentation next month.

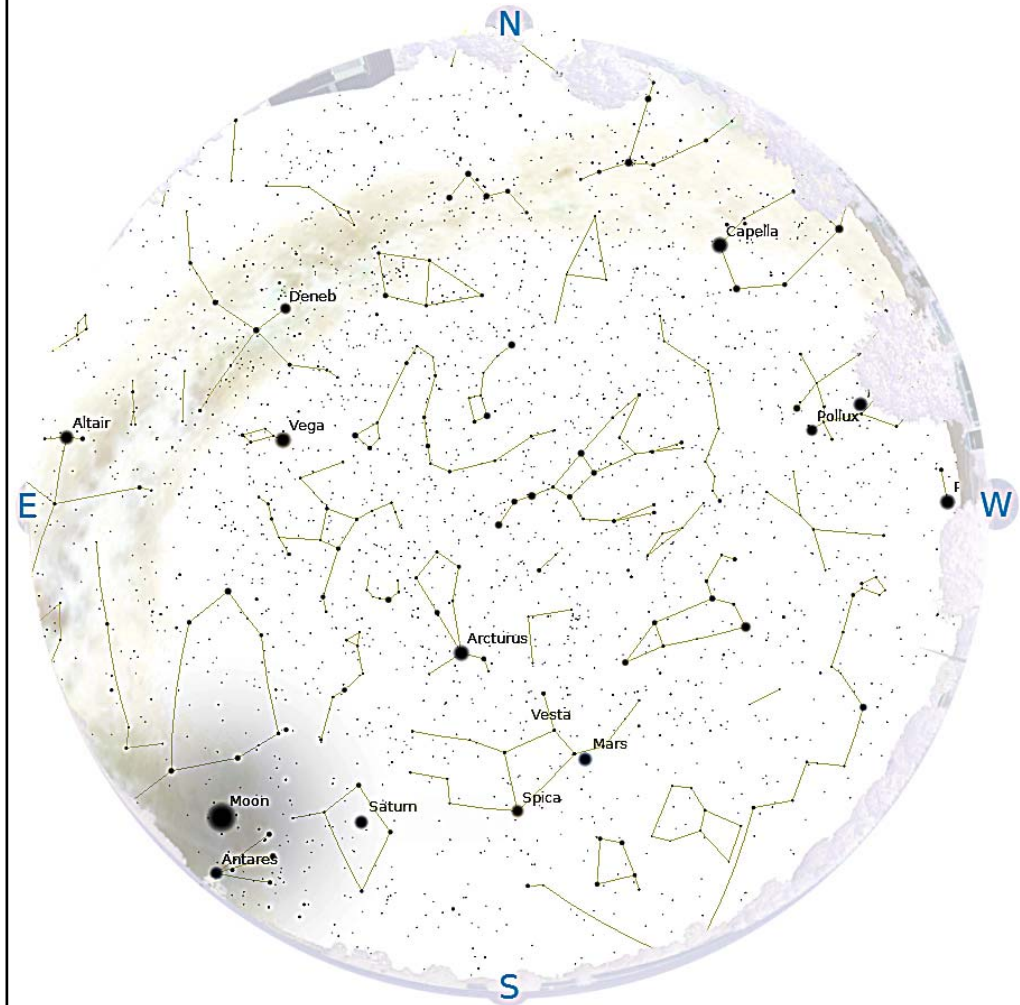
The Constellation of the Month will be selected from one that is readily visible most of the night during the month.



Rugby & District Astronomical Society Sky Notes

by Chris Longthorn

May 2014, no 60



The night sky at 23:00 U.T.C., May15th

Rugby & District Astronomical Society

www.rugbyastro.org.uk


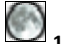
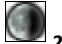
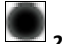
Honorary President:	Roger Jackson	Chair:	Dr Johanna Jarvis
Treasurer :	Sarah Meek	Membership Secretary	Barrie Chessell
Webmaster	David Riley	Secretary:	Lesley Dyke
Sky Notes	Chris Longthorn		

Email rugby-Astro@hotmail.co.uk

Phone 07739-716383

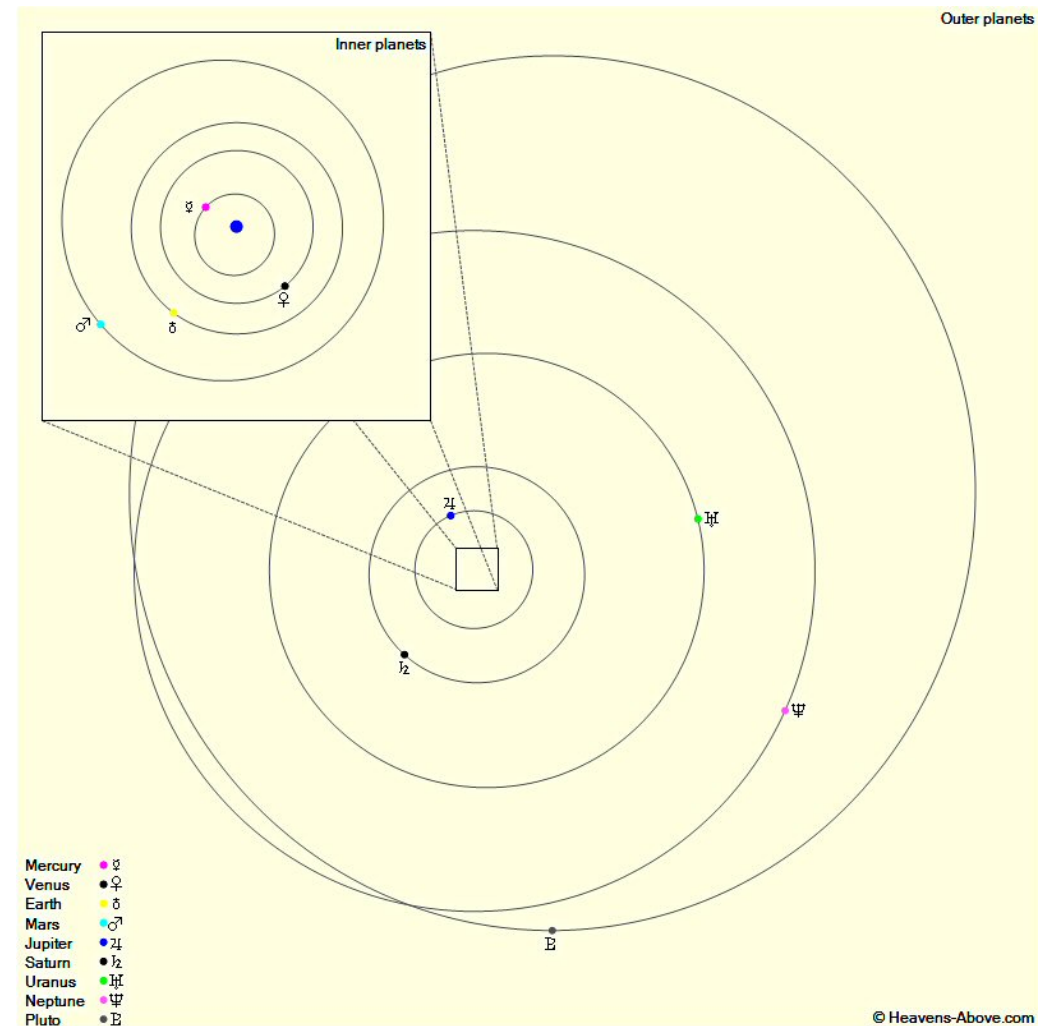
© R&DAS 2014

Sky Events Calendar 2014 May

Sunday	Monday	Tuesday	Wednesday	Thursday	Friday	Saturday
				1 Venus 42.8° W	2 Moon N Dec 15:59 ISS, -3.4 18:55:05 89° SW	3
4	5 Eta Aquarids 06:26	6 Moon Apogee 10:22 Iridium 42, 18:20:15 -7.3 38° 347°	7  7 First Quarter 03:15	8	9	10 Saturn Opp 17:50 Iridium 63, 19:05:08 -7.5 54° 132°
11 Moon-Mars 13:32 Iridium 66, 18:58:58 -5.9 56° 132°	12 Moon-Spica 12:47 Moon A Node 22:06	13	14  14 Moon-Saturn 12:41 Full Moon 19:16	15	16 Moon S Dec 20:10	17 Iridium 63, 18:31:09 -8.4 65° 135°
18 Moon Perigee 11:58 R&DAS 19:30, Meeting Church Lawford Iridium 66, 18:24:57 -5.9 58° 208°	19	20	21  21 Last Quarter 12:59	22	23	24
25 Mercury East 06:59 Moon-Venus 15:43 Moon D Node 17:56	26	27	28  28 New Moon 18:40 Iridium 81, 04:26:13 -6.0 46° 219°	29 Iridium 3, 19:20:49 -7.1 450° 122°	30 Moon N Dec 00:38 Iridium 76, 19:15:26 -7.3 52° 123°	31

All times in UTC, add one hour for BST
 Sky Events Calendar by Fred Espenak and Sumit Dutta (NASA's GSFC)
 ISS, Iridium Data and Solar System Map courtesy of Heavens-Above (www.heavens-above.com)

The Planets, mid month.



Mercury is in Taurus with a magnitude of -0.5, a phase of 63%, and a diameter of 6". It rises at 04:50, transits at 13:22, and sets at 21:56. It is visible low in the west after sunset.

Venus is in Pisces with a magnitude of -4.0, a phase of 72%, and a diameter of 15". It rises at 03:04, transits at 09:28, and sets at 15:52. It is visible in the morning sky.

Mars is in Virgo with a magnitude of -0.9, a phase of 95%, and a diameter of 13". It sets at 02:59, rises again at 15:18, and transits at 21:06. It is well placed for observation throughout the night.

Jupiter is in Gemini with a magnitude of -1.9 and a diameter of 34". It sets at 00:05, rises again at 07:33, and transits at 15:47. It is visible in the evening sky.

Saturn is in Libra with a magnitude of +0.1 and a diameter of 19". It sets at 04:27, rises again at 19:02, and transits at 23:42. It is well placed for observation throughout the night.

Uranus is in Pisces with a magnitude of +5.9 and a diameter of 3". It rises at 02:59, transits at 09:28, and sets at 15:58. It is visible in the morning sky.

Neptune is in Aquarius with a magnitude of +7.9 and a diameter of 2". It rises at 01:58, transits at 07:11, and sets at 12:24. It is visible in the morning sky.