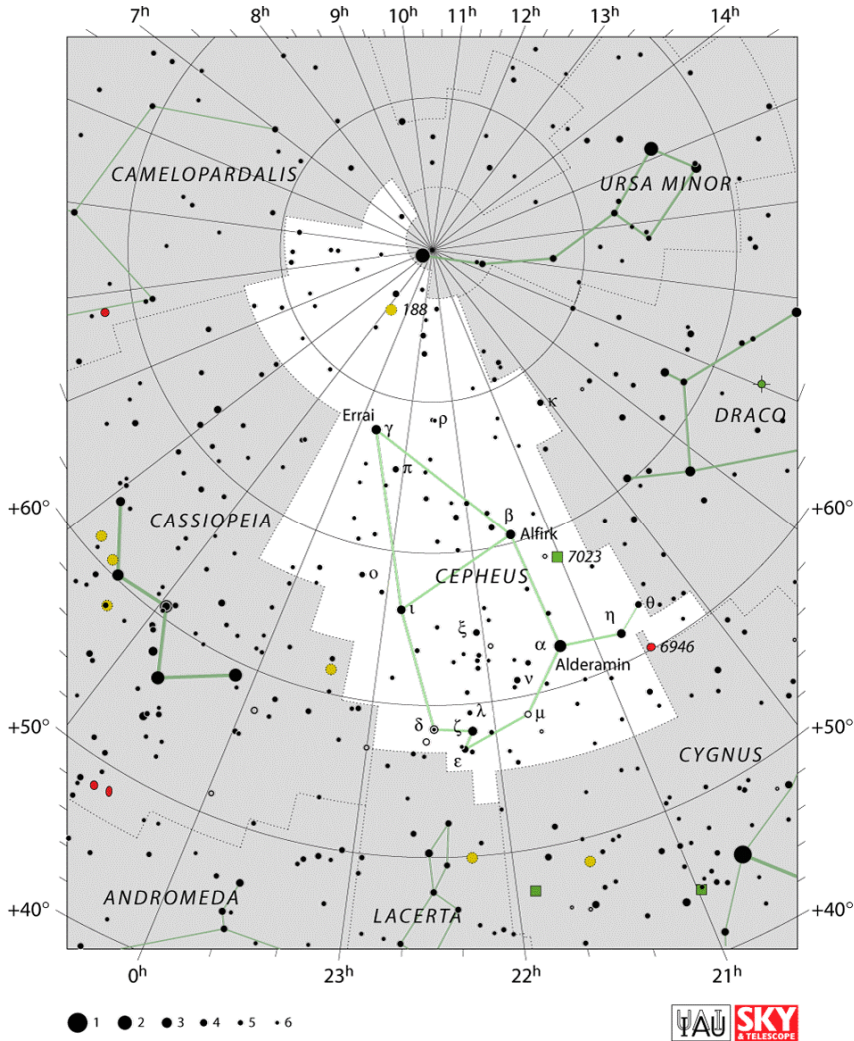


Constellation of the Month - Cepheus.

Your challenge is to observe, and record what you see ready for including in the Sky Notes presentation next month.

The Constellation of the Month will be selected from one that is readily visible most of the night during the month.



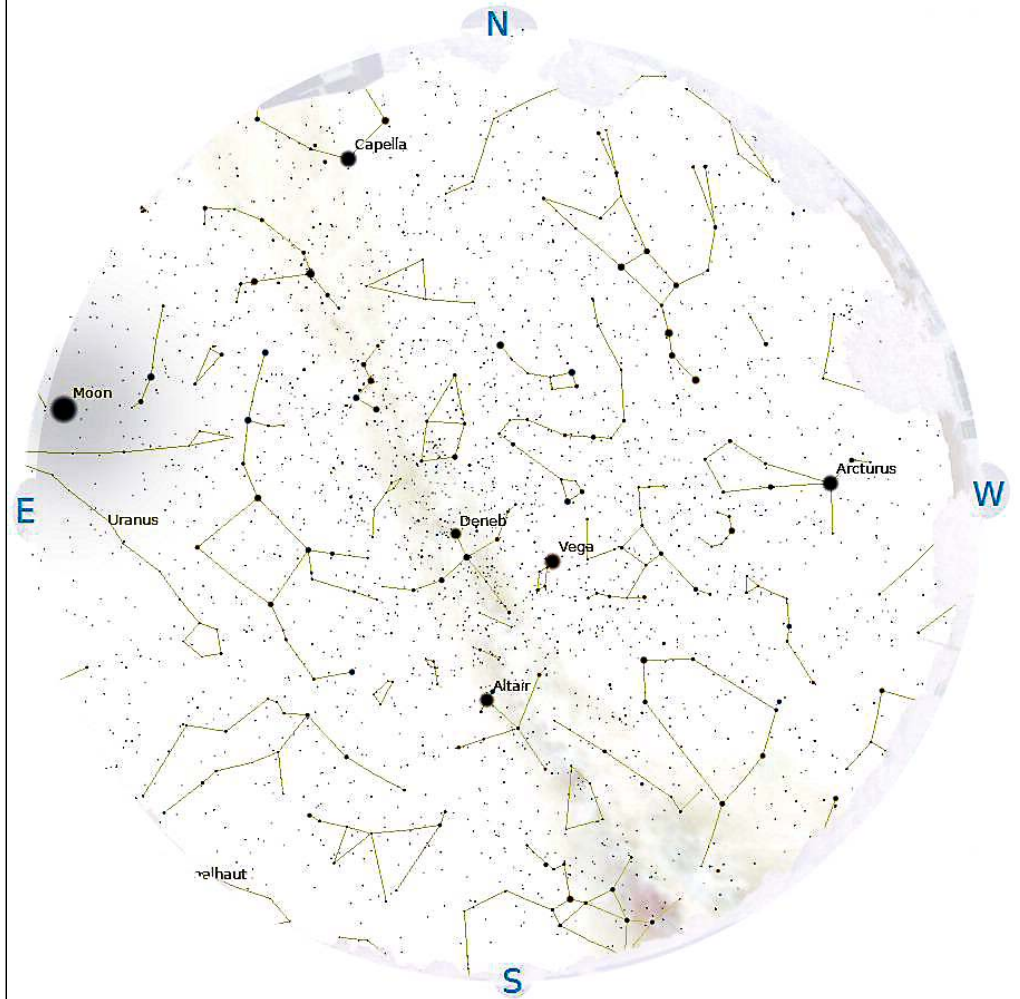
Rugby & District Astronomical Society		www.rugbyastro.org.uk	
Honorary President:	Roger Jackson	Chair:	Dr Johanna Jarvis
Treasurer :	Sarah Meek	Membership Secretary	Barrie Chessell
Webmaster	David Riley	Secretary:	Lesley Dyke
Sky Notes	Chris Longthorn		

Email rugby-Astro@hotmail.co.uk Phone 07739-716383
© R&DAS 2014

Rugby & District Astronomical Society Sky Notes





by Chris Longthorn

August 2014, no 62



The night sky at 23:00 U.T.C., Aug15th

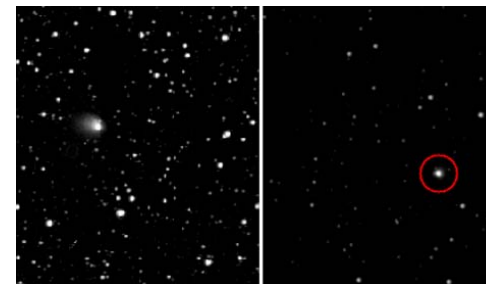
Sky Events Calendar 2014 August

Sunday	Monday	Tuesday	Wednesday	Thursday	Friday	Saturday
					1 Venus 22.3° W	2 Moon A Node 12:26
3 Moon-Mars 11:02 Iridium 66 00:58:54 Mag - 8.2 Alt 47° Az 207° (SSW)	 4 First Quarter 01:50 Moon-Saturn 11:54 Iridium 45 02:41:58 Mag - 7.9 Alt 44° Az 137° (SE)	5	6	7 Moon S Dec 05:26	8 Mercury Super 17:05	9 R&DAS Barbecue, Coomb Abbey Iridium 23 02:07:55 Mag - 8.0 Alt 47° Az 166° (SSE)
 10 Moon Perigee 18:43 Full Moon 19:09	11	12	13 Perseids 01:08	14	15 Moon D Node 01:18	16 R&DAS Barbecue, Coomb Abbey (Reserve)
 17 Last Quarter 13:26 R&DAS monthly meeting, Dave Eagle. Iridium 57 03:04:51 Mag - 7.7 Alt 36° Az 132° (SE)	18 Venus-Jup 05:06 Venus-M44 06:05 Jupiter-M44 07:48	19 Moon N Dec 23:12	20	21	22	23 R&DAS Summer Expedition, Exmoor
24 Moon-Venus 06:48 Moon Apogee 07:09 R&DAS Summer Expedition, Exmoor	 25 New Moon 15:13 R&DAS Summer Expedition, Exmoor	26 Mars-Sat 04:10	27	28	29 Neptune Opp 14:08 Moon A Node 14:14	30
31 Moon-Saturn 20:21						

Rosetta's Comet Sleeps Again

The comet being chased by the long-traveling spacecraft only woke briefly before starting another nap. Comets can be finicky. In April and May Comet 67P/Churyumov-Gerasimenko seemed to have woken up, growing a coma of water ice, carbon dioxide, and other volatiles.

But earlier this month the comet's nucleus showed no signs of its extended coma, as shown in this image from one of the OSIRIS cameras on ESA's Rosetta spacecraft. The little nucleus (about 4 kilometers/2.5 miles wide) is probably not truly bare — there might be low-level activity and a thin coma that can't be detected from Rosetta's distance (430,000 km at the time of this image on June 4th). This isn't surprising, explains mission team member Joel Parker (Southwest Research Institute). The comet probably sputters when starting up during each orbit, kind of like a car engine that turns over several times before starting. Because the previous activity was temporary, it bodes well for the approaching Rosetta: the spacecraft will be able to watch the onset of full-fledged coma growth from close up. Rosetta will rendezvous with Comet Churyumov-Gerasimenko in August and escort it for more than a year through its solar pass. If you'd like to know more about the mission (and the nail-biting wait for the spacecraft to phone home), check out the cover story on Rosetta in Sky & Telescope August 2014 issue.

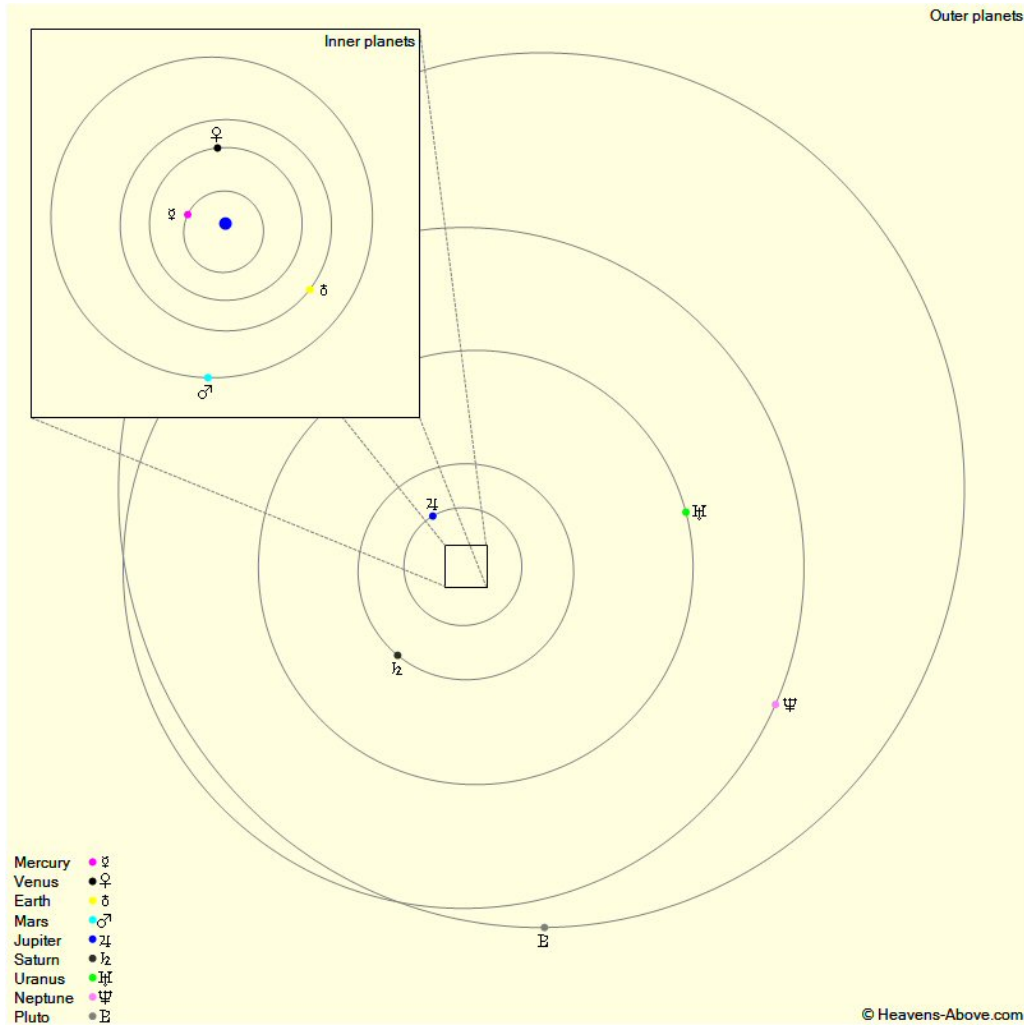


Comet 67P/Churyumov-Gerasimenko as seen by the Rosetta spacecraft on June 4, 2014.

www.skyandtelescope.com

For bright ISS passes this month (very frequent, see next page)

The Planets, mid month.



Mercury is in Leo with a magnitude of -1.3, a phase of 97%, and a diameter of 5". It rises at 06:23, transits at 13:39, and sets at 20:53. It is currently too close to the Sun to be observed.

Venus is in Cancer with a magnitude of -3.9, a phase of 95%, and a diameter of 10". It rises at 03:59, transits at 11:55, and sets at 19:51. It is visible low in the east before sunrise.

Mars is in Libra with a magnitude of +0.5, a phase of 87%, and a diameter of 7". It rises at 13:30, transits at 18:04, and sets at 22:38. It is visible in the evening sky.

Jupiter is in Cancer with a magnitude of -1.8 and a diameter of 32". It rises at 04:17, transits at 12:07, and sets at 19:56. It is visible low in the east before sunrise.

Saturn is in Libra with a magnitude of +0.6 and a diameter of 17". It rises at 13:48, transits at 18:30, and sets at 23:13. It is visible in the evening sky.

Uranus is in Pisces with a magnitude of +5.8 and a diameter of 4". It transits at 04:32, sets at 11:05, and rises again at 21:56. It is visible in the morning sky.

Neptune is in Aquarius with a magnitude of +7.8 and a diameter of 2". It transits at 02:06, sets at 07:17, and rises again at 20:51. It is well placed for observation throughout the night.

All August ISS Passes > mag 2

Date	Mag	Mid PassTime	Altitude	Direction
01-Aug	-3	01:35:20	56°	ESE
01-Aug	-3.4	03:11:24	68°	SSW
02-Aug	-3.4	02:22:10	77°	S
02-Aug	-2.7	03:58:39	35°	SSW
03-Aug	-3.1	03:09:29	46°	SSW
03-Aug	-2.9	23:07:08	39°	SSE
04-Aug	-2.4	22:17:57	28°	SSE
04-Aug	-3.5	23:54:21	72°	S
05-Aug	-3.3	23:05:04	60°	SSE
06-Aug	-3.1	22:15:47	47°	SSE
06-Aug	-3.4	23:52:21	81°	S
07-Aug	-2.6	21:26:32	36°	SSE
07-Aug	-3.4	23:03:00	78°	S
08-Aug	-3.4	22:13:39	69°	S
08-Aug	-3.2	23:49:57	65°	WSW
09-Aug	-3.2	21:24:18	57°	SSE
09-Aug	-3.4	23:00:54	80°	S
10-Aug	-3.4	22:11:30	80°	S
10-Aug	-2.4	23:47:12	39°	WSW
11-Aug	-3.3	21:22:06	76°	S
11-Aug	-3.3	22:58:43	66°	SSW
12-Aug	-3.3	22:09:18	76°	S
13-Aug	-3.3	21:19:51	81°	S
13-Aug	-2.9	22:56:23	44°	SSW
14-Aug	-3.1	22:06:58	57°	SSW
15-Aug	-3.2	21:17:31	69°	SSW
16-Aug	-2.4	22:04:30	36°	SSW
17-Aug	-2.8	21:15:03	48°	SSW

Detailed Map of Cepheus

Cepheus is the 27th largest constellation in the night sky, occupying an area of 588 square degrees.

It is located in the northern hemisphere and can be seen at latitudes between +90° and -10°.

The neighbouring constellations are Camelopardalis, Cassiopeia, Cygnus, Draco, Lacerta, and Ursa Minor.

